

Office of Research

UC Davis

# Center for Healthcare Policy and Research

Annual Report

Fiscal Year 2022-23



**UC DAVIS**

Center for Healthcare  
Policy and Research

Table of Contents

Office of Research

Profile and General Information .....	3
Mission Statement .....	5
Research Highlights.....	6
Education Highlights .....	10
Future Vision.....	12
SWOT Analysis .....	13
Personnel.....	15
Appendix 1: Strategic Plan .....	17
Appendix 2: Publications .....	18
Appendix 3: Outreach Activities.....	33
Appendix 4: Education .....	42
Appendix 5: Additional Information .....	46
Appendix 6: Organizational Chart .....	47
Appendix 7: Program Members.....	48
Appendix 8: CHPR Advisory Boards.....	53
Appendix 9: Diversity, Equity and Inclusion .....	54

# Profile and General Information

**Name:** Center for Healthcare Policy and Research

**Year Established:** 1994

**Social Media:** Website: <https://health.ucdavis.edu/chpr/>  
Facebook: <https://www.facebook.com/ucdchpr/>  
Instagram: [https://www.instagram.com/ucd\\_chpr/](https://www.instagram.com/ucd_chpr/)  
LinkedIn: <https://www.linkedin.com/company/uc-davis-center-for-healthcare-policy-research>  
X (formerly Twitter): [https://twitter.com/UCD\\_CHPR](https://twitter.com/UCD_CHPR)

**Director:** Courtney Lyles, PhD (2023 to present)  
[crlyles@ucdavis.edu](mailto:crlyles@ucdavis.edu)  
(916) 734-7926

**Associate Director:** Jeffrey Hoch, MA, PhD (2015 to present)  
[jshoch@ucdavis.edu](mailto:jshoch@ucdavis.edu)  
(916) 734-0822

**Administrative Contact:** Michael Webster  
Chief Administrative Officer  
[miwebster@ucdavis.edu](mailto:miwebster@ucdavis.edu)  
(916) 734-4665

**Communication Contact:** Bill Daehler  
Digital Communications Specialist 3  
[wdaehler@ucdavis.edu](mailto:wdaehler@ucdavis.edu)  
(916) 734-2399

**Assistant Contact:** Kirstin Truitt  
Administrative Officer II CX  
[kgtruitt@ucdavis.edu](mailto:kgtruitt@ucdavis.edu)  
(916) 734-7918

**Space:** CHPR is located at the Broadway building in Sacramento near the UC Davis Health campus. CHPR staff continued to work mostly remotely during FY 22/23 and maintained a high level of productivity. Towards the tail end of the fiscal year, more in person activities took place for the Center. Staff meetings were effectively run in a hybrid/virtual format with a continual increase in the number of in-person attendees. As staff began to work more frequently in the office, additional prepping for hybrid work was a top priority (e.g. numerous workstations had a newer set of dual monitors and a docking station available for seamless integration with the employee's laptop). The main administrative suite had a scanner/copier/printer installed. The Director's office was prepared for use ahead of the July 1, 2023 start date.

**Significant Equipment/Instrumentation:** CHPR continues to use high-performance computers to support statistical analysis of large datasets (e.g., Department of Health Care Access and Information, Healthcare Cost and Utilization Project databases, Medicare Provider Utilization and Payment Data, etc.). CHPR utilized six virtual servers from UC Davis Health IT this fiscal year to aid with analyzing large datasets while not tying up CHPR's existing computing resources. With dataset sizes continuing to expand, CHPR's computing capacity needs have also expanded. CHPR continues to partner with UC Davis Health to identify the best solutions to this challenge (e.g., utilizing the new Advanced Computing Environment [ACE]/HC2 or Amazon Web Services (AWS) and purchased a server that is housed at the Data Center).

---

## Mission Statement

The mission of the Center for Healthcare Policy and Research is to facilitate research, promote education, and inform policy about health and healthcare.

The goal of CHPR is to improve the health of the public by contributing new knowledge about healthcare access, quality, costs, and outcomes.

The objectives of CHPR are to develop, support, and conduct mission-related interdisciplinary and collaborative research projects; to support the education and career development of scholars interested in health services and health policy research; and to assist healthcare policy formulation and improve health services delivery through the synthesis, interpretation, and dissemination of research findings.

We strive to achieve our goal and objectives through interdisciplinary, collaborative research, teaching and mentoring, applied research, and policy analysis.

---

# Research Highlights

The Center for Healthcare Policy and Research has continued a high level of research productivity in 2023, as reflected in our funding, projects, and publications. Furthermore, we have continued to uphold our mission to support training opportunities in applied research, with an emphasis on students across departments and programs.

## Extramural funding

During fiscal year 2022-2023, CHPR received a total of \$5.6 million in funded awards, including grants to support work in substance use research, improve measures of healthcare quality, and inform health-related policy. Nearly \$1.8 million in federal and federal-flowthrough funding was received.

In FY 2022-2023, there were 11 CHPR-affiliated academic personnel with active grant funding administered through CHPR. The following sections briefly describe highlights achieved by CHPR-affiliated researchers FY 2022-2023. CHPR submitted 25 proposals for faculty affiliates totaling \$27 million in requested funded. This includes \$12 million in federal funding (e.g., from NIH and CDC).

## Major awards

- CHPR houses the CA Quits program, a statewide tobacco learning collaborative and workgroups for health systems and plans serving Medi-Cal members. The program received a 3-year \$2.6 million renewal grant from the California Department of Public Health's California Tobacco Control Branch. The new grant will allow Elisa Tong, Professor of Internal Medicine at UC Davis, and Cindy Valencia, Project Director of CA Quits, to expand the project and advance the delivery of tobacco treatment with public hospital clinics and Medi-Cal managed care plans. The team has helped build capacity with shared learning over the past five years. Now, they are focusing more on population health strategies and encouraging health systems to identify their patients or members who are tobacco users and examine the impact of proactive outreach on health equity.
- We received a new CDC grant to study risks of combined use of opioids and 'benzos.' A team of UC Davis Health researchers led by Joshua Fenton (Professor in Department of Family and Community Medicine) received a 3-year \$1.05 million grant from the Centers for Disease Control and Prevention (CDC) to identify risk and protective factors linked to the combined use of opioids and benzodiazepines, a group of drugs used to treat anxiety and insomnia.
- CHPR received an NIH award to develop a predictive model for safely prescribing opioids. Researchers at CHPR have received \$170,000 from the National Institute on Drug Abuse at the National Institutes of Health (NIH) to develop a model to help predict the risk of long-term opioid use. The research team will be led by CHPR researcher Iraklis Erik Tsergounis.

## Policy development and impact (state, national, international)

- California Health Benefits Review Program (CHBRP). CHPR staff and faculty affiliates collaborate with UCOP-based CHBRP and sister UC campuses to produce non-partisan, evidence-based

analyses of health insurance benefit mandates proposed by California state legislators. To meet the legislative timeline, CHPR staff evaluate the medical effectiveness and estimate the public health impacts of the proposed legislation within a 60-day timeframe. Topics in 2023 included Social Determinants of Health (AB 85), PANDAS/PANS (AB 907), Medication-Assisted Treatment (AB 1288), HIV PrEP/PEP (SB 399), Antiretroviral Drugs, Devices and Products (SB 427), Self-measured Blood Pressure Devices (SB 694), and Healthcare Coverage for Naloxone for Opioid Overdose (AB 1060).

- California State Policy Evidence Consortium (CalSPEC). Policy experts on our staff are part of CalSPEC, an initiative to leverage expertise across the University of California to support evidence-based policymaking. CalSPEC is a project of UC Center Sacramento and seeks to enhance policy decision-making through rapid evidence and policy reviews on complex topics of concern or interest to the State Legislature. Dominique Ritley, a senior health policy researcher at CHPR, serves as co-director at CalSPEC. In January 2023, a report titled "[Microplastics Occurrence, Health Effects, and Mitigation Policies: An Evidence Review for the California State Legislature](#)" was published and furnished to the State Legislature. Staff also began work on the next report for the State Legislature about near-roadway air pollution.
- US Preventive Services Task Force (USPSTF). CHPR staff and faculty affiliates work with colleagues at the Kaiser Permanente Evidence-based Practice Center (EPC) to conduct systematic reviews on prevention interventions for the US Preventive Services Task Force (USPSTF). These systematic reviews have informed recommendations on breast, cervical and prostate cancer screening, tobacco cessation and screening for hypertension. Staff are responsible for evaluating research studies against predefined inclusion and quality criteria; extracting relevant data and performing qualitative and quantitative data synthesis; managing large quantities of references using citation management and systematic review platforms; drafting reports, manuscripts, and presentations based on review findings.
- Hospital Measure Development and Maintenance for CMS and AHRQ. Patrick Romano works with a CHPR team to develop, maintain, and refine quality and patient safety measures for use by the Centers for Medicare and Medicaid Services (CMS) and the Agency for Healthcare Research and Quality (AHRQ). The CHPR team identifies relevant clinical concepts and supporting evidence, provides expert guidance on use of ICD-10-CM/PCS codes to build and refine measure specifications, performs complex analyses to support measure reliability and validity testing, and shepherds measures through CMS' endorsement and rulemaking processes. The team is also responsible for responding to queries from the stakeholder and user community and refining measure specifications for continuous improvement.
- Cal Long Term Care Compare (CLTCC). Co-PIs Patrick Romano and Debra Bakerjian, Associate Dean and Clinical Professor at the Betty Irene Moore School of Nursing at UC Davis, work with a CHPR team to identify, analyze, and aggregate long-term care quality measures for public reporting on the CLTCC website. The website provides unbiased, evidence-based information from multiple sources about skilled nursing facilities and – commencing in July 2023 – hospice and home health agencies. Our staff work with a technical advisory board and board of directors to rate the quality of care provided by these entities to inform consumer decision making and encourage industry quality improvement. This work requires evaluating, cleaning,

and combining state and federal data sets; statistical analysis; and translational work to communicate quality measures in consumer-friendly terms.

- Patient Safety Network (PSNet). Under the leadership of Patrick Romano and Deb Bakerjian, UC Davis has assumed editorial leadership for AHRQ's PSNet, which is the premier federal resource for disseminating information about improving patient safety and preventing medical errors. The CHPR team curates the PSNet Weekly Update, which highlights new patient safety literature, news, tools, and events. Our team collaborates with faculty and staff across UC Davis Health to develop WebM&M commentaries, which feature expert analysis of medical errors submitted anonymously to PSNet, as well as primers on key topics in patient safety.
- Evaluation of California's Mandatory Use of the Controlled Substance (CURES) Prescription Database. CHPR provides project management support and assists with data acquisition, state and UC Davis IRB approval, report writing, and the client interface. A CHPR statistician provides data management and statistical analysis of data from the California Department of Justice-CURES prescription drug management program, DHCS Medi-Cal records, CDPH death records, and HCAI ED/hospital utilization data.
- Longitudinal Care for Emergency Department Patients with Opioid Use Disorder. CHPR staff create and administer REDCap surveys that cover sensitive material (addiction, stigma, mental health) with study enrollees experiencing opioid use disorder. Additionally, CHPR qualitative researchers are interviewing patients about the range of experiences of transitioning between the emergency department and primary care as part of the CA Bridge program, including barriers and facilitators to patients keeping primary care appointments and staying on buprenorphine over time.
- Weight Loss and Wellness Initiatives. CHPR's Koa Family Study demonstrated compelling results from a "whole health" approach to promoting weight loss among women with low income. Previous findings from this work in community-based settings were expanded to a clinic setting in 2023 at the UC Davis Health Folsom Clinic. This demonstration project evaluated a telewellness weight loss program serving women aged 29-47, demonstrating high participant satisfaction and improved well-being tied to better diet, increased physical activity, and enhanced stress management.
- Tobacco Cessation Statewide via the CA Quits Program. The CA Quits program provides free tobacco cessation resources for physicians. The California Medical Association (CMA) foundation – called the Physicians for a Healthy California – has partnered with the CA Quits program to provide physicians with free tobacco cessation resources and learning opportunities.
- Healthy Living Clinic Initiative. This initiative funded by the California Department of Public Health provides technical assistance to 10 community clinics to advance tobacco cessation using quality improvement and system change methods. A large tobacco cessation mailer campaign to increase referrals for phone-based counseling (with Kick It California) was just launched, targeting over 6,000 clinic patients. An additional 10 clinic sites are receiving practice facilitation in the initiative, which began in August 2023.



## Research results, breakthroughs

CHPR affiliates and staff published research findings in numerous academic journals. Published articles are listed in Appendix 2.

- Watchful waiting as a strategy for reducing low-value spinal imaging. CHPR staff work on a four-year clinical trial funded by the Agency for Healthcare Research and Quality (AHRQ). This mixed methods study, led by Joshua Fenton, a UC Davis physician and vice chair of research in the Department of Family and Community Medicine, investigated the potential for watchful waiting messaging to reduce low-value spinal imaging in primary care. Key-informant interviews with medical providers and focus groups with patients who received care for acute low back pain were conducted to inform a standardized patient-based intervention designed to teach practicing primary care providers how to advise watchful waiting when patients request low-value spinal imaging for low back pain. CHPR staff provided project management, standardized patient training, qualitative methods and statistics.
- Tapering may have negative impacts for patients taking long-term opioids. A new CHPR study found that tapering, or gradually reducing, opioid use may have unintended negative health impacts for some patients on long-term opioid therapy. Researchers examined data from more than 110,000 patients who had been receiving stable long-term opioid therapy. They found that opioid tapering was associated with fewer primary care visits and a significant increase in emergency department visits and hospitalizations.
- Local area code is key for reaching out to low-income smokers. New findings published in Nicotine and Tobacco Research show a simple, but valuable approach can help engage low-income smokers to try quitting tobacco. The study tested a proactive, phone-based outreach strategy using local vs. generic caller area codes, with local area codes performing best. Researchers called English and Spanish-speaking smokers with Medicaid insurance who had not received tobacco treatment at previous clinic visits. The trial was conducted by UC Davis Health and UC San Diego Health Sciences researchers along with Los Angeles County Department of Health Services (LADHS). The study was funded by the Tobacco-Related Disease Research Program Community Practice-Based Implementation Research Award 28CP-0039.

---

## Education Highlights

- We co-hosted more than 120 students, faculty and staff who attended the inaugural [Applied Public Health Research Day](#) in April 2023. Participants learned and networked, while students and postdoctoral scholars presented public health research. The event, co-hosted with the Graduate Group in Public Health Sciences and Healthy UC Davis, included more than 30 posters from undergraduate, graduate, and medical students, as well as postdoctoral scholars, fellows, and staff from both UC Davis campuses in Davis and Sacramento.
- A range of topics in health services and outcomes research, as well as health policy topics, were presented during the CHPR Seminar Series (listed in the UC Davis General Catalog as EPI 291 and GMD 291, Seminars in Human Health Services Research and Clinical Epidemiology). CHPR collaborated with the UC Davis Perinatal Origins of Disparities (POD) Center and the Clinical and Translational Science Center (CTSC) to co-host several seminars in Fall 2022. A list of seminar speakers and topics presented during FY 2022-2023 can be found in **Appendix 4, Table 2**, and on the CHPR website.
- CHPR continues to support the university's education mission by offering the popular, interdisciplinary course: Principles and Methods of Comparative Effectiveness Research (CLH: 210Y) taught by Dr. Jeffrey Hoch. The course introduces students to basic methods used in comparative effectiveness research and engages students in team science for final projects. Students often publish their final projects after completing the course.
- CHPR faculty and staff continue to mentor undergraduate students, graduate students, medical students, postdoctoral fellows, and junior faculty in research on healthcare outcomes, quality, access, and costs to inform best healthcare practices and health policy.
- CHPR continues mentoring students and faculty interested in utilizing qualitative research methods. Qualitative research analyst, Dr. Melissa Gosdin, is co-mentoring Dr. Simon Ascher with his KL2 award examining patients preferences and goals for hypertension treatment. The study will enable patients to calibrate potential outcomes from blood pressure therapy according to their personal values.
- CHPR staff members Dr. Melissa Gosdin and Bethney Bonilla co-lead recurring meetings for CHPR affiliates and staff on anti-racism matters; they present materials on issues related to diversity, equity, and inclusion and the group discusses them and ways to inform CHPR hiring and other practices.
- Dr. Melissa Gosdin and Bethney Bonilla began providing mentoring to Sarisha Bhalla, an undergraduate student in Global Disease Biology. Sarisha is conducting her own research study "Clinician Perspectives of Home Dialysis." Dr. Gosdin is also mentoring UC Davis Nursing PhD student Kurt David in qualitative research methods. Kurt is collecting primary data collection on the anal cancer needs of people living with HIV under clinical care in San Francisco. Dr. Gosdin is also mentoring the following students in qualitative research methods: Sydney Hollingsworth, Zaneb Mehmood, and Carlo Juarez Fuentes. Dr. Gosdin created a qualitative discussion group that meets weekly. The group is open to any student (undergraduate, graduate, and medical students)

wanting to learn more about qualitative research methods.

- Dr. Gosdin also contributed to teaching several School of Medicine courses, including co-instructing with Dr. Jennifer Karlin, Professor of Family and Community Medicine, the course "The Qualitative Experience: I-RESTORE" and guest lecturing on qualitative methods for Dr. Patrick Romano's "Clinical Epidemiology" course.
- After consulting with staff from the UC Davis Diversity, Equity, and Inclusion office (DEI), CHPR established a schedule of unit-wide training sessions led by DEI staff. See **Appendix 9** for a full list of DEI sessions led, virtually and in-person, by DEI staff.
- CHPR was an active participant in Research Forums both in Davis and Sacramento, providing outreach to students and others interested in applied health research. This led to follow-up meetings with students interested in learning more the type of research CHPR supports, and potential for matching to ongoing research projects.
- Nan Wang, a graduate student researcher mentored by Dr. Elisa Tong, presented two posters at Applied Research Day. One poster focused on tobacco use and mental health of college students before and during the COVID-19 pandemic. The other poster focused on disparities of those with and without chronic diseases receiving advice from California's Medicaid program.

---

# Future Vision

## Future key goals

In 2024, CHPR will celebrate its 30<sup>th</sup> anniversary as well as launch a new strategic plan – both of which are huge milestones for our work. We are focused on expanding our Center's influence both internally as well as externally, with growth in our grant submissions/funding as well as breadth of projects. Specific goals, such as stronger relationships with the UC Davis Clinical and Translational Sciences Center, will be critical to the overall vision of CHPR and will be reflected in the 2024 Strategic Plan.

## Future key initiatives

As stated above, CHPR has already begun and will complete a full strategic planning process in 2024 with staff, affiliates, and leaders of the Center. In February 2024, there will be an all-day Mission/Visions/Values retreat. In subsequent months of 2024, CHPR will generate a strategic plan and begin implementation.

CHPR also continually seeks to expand our training and educational mission. In 2023-24, the Center will participate in the Quarter at Aggie Square while collaborating with faculty leading various experiences (e.g. Advancing Health Care Equity).

## Sources of new/increased revenue

Each year, we have an internal goal to increase the number of principal investigators and/or the number of submitted grants through the Center, with special attention to the breadth of participation and engagement in research across multiple disciplines.

## Marketing/development efforts

With a new Director on board, CHPR will further explore potential opportunities with the Office of Research Development Officer.

---

# SWOT Analysis

## Strengths

- Appointment of a permanent Director after a national search
- Strong grants administration team (e.g., Finance/Research Administrator and CAO)
- Experienced Digital Communications Specialist who is utilized by multiple departments across SOM and Campus for website design and updates, social media posts, and coordination with Public Affairs/Communications for news releases and internal and external communications.
- Capacity to support preparation and submission of large, multidisciplinary grant applications and attract research funding from diverse sources
- Faculty affiliates with state-of-the-art expertise in health services research methods used in a variety of disciplines
- Capacity as a shared research services model to support administrative functions for smaller centers
- National recognition for expertise in conducting systematic evidence reviews, policy analyses, and health economic analyses
- Key team responsible for assessing medical effectiveness and public health impacts of proposed health insurance legislation for the California Health Benefits Review Program (CHBRP)
- Policy experts on our staff who are part of the California State Policy Evidence Consortium (CalSPEC), an initiative to leverage expertise across the University of California to support evidence-based policymaking
- CHPR collaborates with numerous School of Medicine and Campus departments including the Clinical Translational Science Center (CTSC), Departments such as Public Health Sciences and General Internal Medicine, and the Perinatal Origins of Disparities (POD) Center
- Experienced, skilled, and committed research staff, from research assistants to PhD researchers, with expertise in an array of research methods including statistical analysis, health economics, health policy analysis, systematic reviews, comparative effectiveness methods, qualitative methods, survey research, and simulated patient studies
- Well-regarded research seminar series with a growing online audience

## Weaknesses

- Backup support for key fiscal, research, and HR administrative functions is limited, due in part to the leanness of the operating team coinciding with a growth in extramural research awards and proposals submitted

- Potential collaborators and affiliates, internal and external to UC Davis, lack adequate visibility and awareness of CHPR and its services
- Infrastructure needs, particularly related to data access and data management with high-level computing power, continues to outpace current capacity

## Opportunities

- Deeper collaborations with other research centers, such as a formal linkage to the CTSC
- Enhancement of CHPR visibility and infrastructure through attainment of space in Aggie Square
- Expanding and diversifying CHPR funding sources, including opportunities to engage additional investigators/PIs
- Expanding computing capacity to enhance CHPR faculty affiliates' ability to compete for research support involving analysis of large health datasets
- Expanding capacity to provide policy analysis (especially to local California legislature and state department agencies)
- Expanding capacity to conduct in-depth research and evaluation within UC Davis Health system
- Enhancement of communication/marketing to increase CHPR visibility
- Obtaining philanthropic funding sources to support Center-specific initiatives and educational programs
- Establishment of additional cross-departmental, multidisciplinary collaborations for training researchers
- Provision of support for faculty who are pursuing large (P-type NIH) grants that include research infrastructure (e.g., "cores")

## Threats

- Potential departure of staff due to 100% remote work opportunities elsewhere that come with salary increases and/or promotional opportunities
- Potential decline in collaboration with SOM departments or other campus-wide departments in which F&A cost sharing/funds flow alters incentives for grant submission via Organized Research Units
- Potential declines in relevant funding opportunities and increased competition for existing funding opportunities, depending on state and federal budgets, which directly impact CHPR staffing
- Increased grant/financial administration complexity for every project, which requires additional core administrative staff support

# Personnel

## Headcount and FTEs

For the purpose of the annual report, OR Human Resources investigated how the terms administrative and clerical are defined and determined that the categories should be defined as listed in the table below. The research unit managers may also wish to consider including additional categories if it would assist with further identifying headcount and FTE.

	Headcount	FTEs
<b>Professional</b> - 99 exempt employees (e.g., Project Policy Analyst 3-4, Clinical Research Analyst 4, statisticians, other research titles, and Supervisors of research personnel)	30	27.2
<b>Administrative</b> - 99 non-exempt employees (e.g., Finance Analyst, Digital Communications Specialist, Administrative Manager, etc.)	3	2.5
<b>Clerical*</b> - employees covered by the CX bargaining unit (e.g., Admin Officer II CX, etc.)	1	1
<b>Research</b> - employees covered by the RX bargaining unit (e.g., SRA I-IV, Museum Scientist, Spectroscopist)	0	0
<b>Service</b> - employees covered by the SX bargaining unit (e.g., Custodian, Assistant Storekeeper, Food Service Worker, Cook, Security Officer, Animal Tech, Lab Helper, Lab Assist, Physical Plant Mechanic)	0	0
<b>Technical</b> - employees covered by the TX bargaining unit (e.g., Computer Resource Specialist, Artist, Development Technician II-V)	0	0
<b>Other</b> – employees not in categories listed above (e.g., Student Assistants, GSRs and Postdoctoral Fellows)	6	2.7
<b>TOTAL Employees</b>	<b>40</b>	<b>33.9</b>

## Affiliated Count

The following table provides a count of all faculty affiliates, postdoctoral fellows, librarians and students involved in CHPR activities.

Role	Total Affiliated
Faculty	121
Postdoctoral Fellows and Postdocs	1
Graduate Students	2
Undergraduate Students	3
Librarians	1

## Active Academic Personnel

The following table provides a list of faculty members actively engaged in CHPR research or supervision/mentoring.

Faculty Members	Title	Department
Bell, Janice, Ph.D., M.P.H., M.N.	Professor	Betty Irene Moore School of Nursing
Fenton, Joshua, M.D., M.P.H.	Professor	Family and Community Medicine

Henry, Stephen G., M.D., M.Sc.	Associate Professor	Internal Medicine
Hoch, Jeffrey. Ph.D.	Professor	Public Health Sciences
Holmes, James, M.D., M.P.H.	Professor	Emergency Medicine
Jerant, Anthony, M.D.	Professor and Chair	Family and Community Medicine
Johnson, David, Ph.D., M.A.	Professor	Neurology
Lyles, Courtney, Ph.D.	Professor	Public Health Sciences
Magnan, Elizabeth, M.D., Ph.D.	Associate Professor	Family and Community Medicine
Melnikow, Joy, M.D., M.P.H.	Professor Emeritus	Family and Community Medicine
Romano, Patrick, M.D., M.P.H.	Professor	Internal Medicine and Pediatrics
Tancredi, Daniel J., Ph.D.	Professor	Pediatrics
Tong, Elisa, M.D., M.A.	Professor	Internal Medicine
Tserougounis, Iraklis Erik, Ph.D.	Assistant Project Scientist	Internal Medicine

### Postdoctoral Researchers, Graduate Students, Undergraduate Students

The following table provides a list of the names of undergraduate and graduate students and postdoctoral researchers directly contributing to CHPR who:

- a. are on the CHPR payroll, and/or
- b. participate—through assistantships, fellowships, or traineeships, or who are otherwise involved—in CHPR work.

Postdoctoral Fellows	Classification	Home Department
Zhang, Yi	Post-Doctoral Fellow	Public Health Sciences

Graduate Students	Classification	Home Department
Jeong, Kayden	Graduate Student	Epidemiology
Smith, Bridgette	Graduate Student	Epidemiology
Wang, Nan	Graduate Student	Public Health Sciences

Undergraduate Students	Classification	Home Department
Anene, Angel	Undergraduate	Political Science
Iwuagwu, Caidon	Undergraduate	Genome Center
Like, Hannah	Undergraduate	CHPR
Chittanuru, Hrithika	Undergraduate	CHPR
Vakutin, Danielle	Undergraduate	English



---

## Appendix 1: Strategic Plan

During FY 2022-2023, CHPR completed the following strategic planning tasks:

- 1) 2022-23 was a period of transition for CHPR and the Center was without a permanent Director. CHPR was led by interim Directors Dr. Anthony Jerant, M.D. Professor and Chair of Family and Community Medicine (July 2022 thru December 2022) and Dr. Jeffrey Hoch, Ph.D. Professor and Chief, Division of Health Policy and Management, Department of Public Health Sciences and long-time Associate Director of CHPR (January 2023 thru June 2023). Both Interim Directors positioned the Center for continued long-term success and seamless integration for the new Director, Dr. Courtney Lyles, who joined CHPR from UCSF with a July 1, 2023 start date. Dr. Miriam Nuño was the interim Assistant Director from January 1, 2023 to June 30, 2023.
- 2) After a brief hiatus due to the COVID-19 pandemic, CHPR had a presence at the Research Expo hosted by the Office of Research in the Spring. At the event, multiple staff from CHPR were at a table to tell the Center's story, meet potential collaborators (e.g. researchers, students, staff from other research Centers, etc.), and distribute CHPR swag (e.g. water bottles).
- 3) Numerous improvements continued to be made with CHPR's website following an entirely brand new website in the prior fiscal year. This included new features (e.g. "Share Your Feedback" page), much content added to the CA Quits and 3PG pages, a page highlighting CHPR's COVID-19 Impacts on Frontline Physicians research, and improved online forms for those requesting our services.
- 4) For FY2023-24, CHPR leadership will be engaging in strategic planning process with active participation from Center staff and core faculty. To start, there will be listening sessions with staff (e.g. managers, statisticians, project teams, administration, etc.) and faculty. In February, there will be an all-day retreat focusing on the mission, vision, and value of the Center. Implementation of the strategic plan will begin to take place in the Fall 2024.

---

## Appendix 2: Publications

### CHPR Affiliate and Grant PIs/Personnel Publications (July 2022-June 2023)

Investigators and select affiliates working on grants; current and former fellows and trainees (\*); and Staff (\*\*) in **BOLD**.

1. Abdelhadi OA, Pollock BH, **Joseph J, Keegan THM**. Shared Decision-Making Among Adolescent and Young Adult Cancer Survivors and Noncancer Adults: Associated Medical Expenditures and Health Care Utilization. J Adolesc Young Adult Oncol. 2023 Apr;12(2):168-176. doi: 10.1089/jayao.2021.0207. Epub 2022 Jun 28. PMID: 35900289
2. Abdelhafez Y, Raychaudhuri SP, Mazza D, Sarkar S, Hunt HL, McBride K, Nguyen M, Caudle DT, Spencer BA, Omidvari N, **Bang H**, Cherry SR, Nardo L, Badawi RD, Chaudhari AJ. Total-Body <sup>18</sup>F-FDG PET/CT in Autoimmune Inflammatory Arthritis at Ultra-Low Dose: Initial Observations. J Nucl Med. 2022 Oct;63(10):1579-1585. doi: 10.2967/jnumed.121.263774. Epub 2022 May 19. PMID: 35589405; PMCID: PMC9536697.
3. Ackerman-Barger K, London M, Yi A, Verzola M, Wilson M, Fine J, **Fancher TL**. Exploring Early Admission Processes: Implications for Nursing Workforce Diversity and Health Care Equity. Nurs Educ Perspect. 2022 Nov-Dec 01;43(6):E73-E75. doi: 10.1097/01.NEP.0000000000000953. Epub 2022 Mar 22. PMID: 35318997.
4. Adesina OO, Brunson A, Fisch SC, Yu B, Mahajan A, Willen SM, **Keegan THM**, Wun T. Pregnancy outcomes in women with sickle cell disease in California. Am J Hematol. 2023 Mar;98(3):440-448. doi: 10.1002/ajh.26818. Epub 2023 Jan 4. PMID: 36594168
5. Andrade A, **Bang H**, Reddick K, Villaseñor B, Tran NK, **May L**. Evaluation of pharmacist guided intervention using procalcitonin and respiratory virus testing. Am J Emerg Med. 2023 Apr;66:146-151. doi: 10.1016/j.ajem.2023.01.041. Epub 2023 Jan 26. PMID: 36773457
6. Arellano Carmona K, Chittamuru D, **Kravitz RL**, Ramondt S, Ramírez AS. Health Information Seeking From an Intelligent Web-Based Symptom Checker: Cross-sectional Questionnaire Study. J Med Internet Res. 2022 Aug 19;24(8):e36322. doi: 10.2196/36322. PMID: 35984690; PMCID: PMC9440406.
7. Azenkot T, **Chatterton B\***, **Schwarz EB**. Anticoagulant Prescriptions Provided in US Ambulatory Practice, 2014 to 2016. J Gen Intern Med. 2022 Oct;37(13):3515-3517. doi: 10.1007/s11606-022-07536-y. Epub 2022 Apr 11. PMID: 35411531; PMCID: PMC9550935.
8. Azenkot T, **Dove MS**, Fan C, **Valencia CV\*\***, **Tong EK, Schwarz EB**. Tobacco and Cannabis Use During and After Pregnancy in California. Matern Child Health J. 2023 Jan;27(1):21-28. doi: 10.1007/s10995-022-03551-x. Epub 2022 Oct 3. PMID: 36192518; PMCID: PMC9529159.
9. Azenkot T, **Dove MS\***, Fan C, **Valencia CV,\*\*** **Tong EK, Schwarz EB**. Tobacco and Cannabis Use During and After Pregnancy in California. Matern Child Health J. 2023 Jan;27(1):21-28. doi: 10.1007/s10995-022-03551-x. Epub 2022 Oct 3. PMID: 36192518
10. Barr HK, Guggenbickler AM, **Hoch JS**, Dewa CS. Real-World Cost-Effectiveness Analysis: How Much Uncertainty Is in the Results? Curr Oncol. 2023 Apr 7;30(4):4078-4093. doi: 10.3390/curroncol30040310. PMID: 37185423
11. Barroso CS, Yockey A, Degon E, Gautam Poudel P, **Brown SD**, Hedderson MM, Moreno-Hunt C, Ehrlich SF. Efficacious lifestyle interventions for appropriate gestational weight gain in women with overweight or obesity set in the health care system: a scoping review. J Matern Fetal Neonatal Med. 2022 Dec;35(25):6411-6424. doi: 10.1080/14767058.2021.1914576. Epub 2021 May 25. PMID: 34034608; PMCID: PMC8613304.

12. Bernstein HM, English C, Young RB, **Venugopal S**. A 70-Year-Old Man With Relapsed CNS Lymphoma Has Incidental Finding of Right Atrial Mass. *Chest*. 2022 Jul;162(1):e43-e48. doi: 10.1016/j.chest.2022.01.029. PMID: 35809949; PMCID: PMC9279649.
13. Boatright D, Anderson N, Kim JG, Holmboe ES, McDade WA, **Fancher T**, Gross CP, Chaudhry S, Nguyen M, Nguemeni Tiako MJ, Colson E, Xu Y, Li F, Dziura JD, Saha S. Racial and Ethnic Differences in Internal Medicine Residency Assessments. *JAMA Netw Open*. 2022 Dec 1;5(12):e2247649. doi: 10.1001/jamanetworkopen.2022.47649. PMID: 36580337.
14. Boozé ZL, Le H, Shelby M, Wagner JL, **Hoch JS**, Roberto R. Socioeconomic and geographic disparities in pediatric scoliosis surgery. *Spine Deform*. 2022 Nov;10(6):1323-1329. doi: 10.1007/s43390-022-00551-3. Epub 2022 Jul 16. PMID: 35841474.
15. Borgman MA, **Nishijima DK**. Tranexamic acid in pediatric hemorrhagic trauma. *J Trauma Acute Care Surg*. 2023 Jan 1;94(1S Suppl 1):S36-S40. doi: 10.1097/TA.0000000000003775. Epub 2022 Aug 31. PMID: 36044459
16. **Brown SD**, Hedderson MM, Gordon N, Albright CL, Tsai AL, Quesenberry CP, Ferrara A. Reach, acceptability, and perceived success of a telehealth diabetes prevention program among racially and ethnically diverse patients with gestational diabetes: the GEM cluster-randomized trial. *Transl Behav Med*. 2022 Jul 18;12(7):793-799. doi: 10.1093/tbm/ibac019. PMID: 35849139; PMCID: PMC9291385.
17. **Buggs SAL**, Zhang X, Aubel A, Bruns A, Kravitz-Wirtz N. Heterogeneous effects of spatially proximate firearm homicide exposure on anxiety and depression symptoms among U.S. youth. *Prev Med*. 2022 Dec;165(Pt A):107224. doi: 10.1016/j.ypmed.2022.107224. Epub 2022 Aug 25. PMID: 36029922.
18. Butler AM, **Brown SD**, Carreon SA, Smalls BL, Terry A. Equity in Psychosocial Outcomes and Care for Racial and Ethnic Minorities and Socioeconomically Disadvantaged People With Diabetes. *Diabetes Spectr*. 2022 Summer;35(3):276-283. doi: 10.2337/dsi22-0006. Epub 2022 Aug 15. PMID: 36082019; PMCID: PMC9396713.
19. Chantarat T, Rogers TB, Mitchell CR, **Ko MJ**. Perceptions of workplace climate and diversity, equity, and inclusion within health services and policy research. *Health Serv Res*. 2022 Jul 9. doi: 10.1111/1475-6773.14032. Epub ahead of print. PMID: 35808931.
20. **Chatterton B\***, **Agnoli A**, **Schwarz EB**, **Fenton JJ**. Alcohol Screening During US Primary Care Visits, 2014-2016. *J Gen Intern Med*. 2022 Nov;37(15):3848-3852. doi: 10.1007/s11606-021-07369-1. Epub 2022 Jan 19. PMID: 35048299; PMCID: PMC9640516.
21. **Chen MJ**, Cheema R, **Hoyt-Austin A\***, **Agnoli A**, Kuhn-Riordon K, **Kair LR**. Vaccination and treatment options for SARS-CoV2 infection affecting lactation and breastfeeding. *Semin Fetal Neonatal Med*. 2023 Feb 13:101425. doi: 10.1016/j.siny.2023.101425. Online ahead of print. PMID: 36804921
22. **Chen MJ**, Jensen JT, Kaunitz AM, Achilles SL, Zatik J, Weyers S, Piltonen T, Suturina L, Apolikhina I, Bouchard C, Archer DF, Jost M, Foidart JM, Creinin M. Tolerability and safety of the estetrol/drospirenone combined oral contraceptive: Pooled analysis of two multicenter, open-label phase 3 trials. *Contraception*. 2022 Dec;116:44-50. doi: 10.1016/j.contraception.2022.10.004. Epub 2022 Oct 17. PMID: 36257374.
23. **Chen MJ**, **Kair LR**, **Schwarz EB**, Creinin MD, Chang JC. Future Pregnancy Considerations after Premature Birth of an Infant Requiring Intensive Care: A Qualitative Study. *Womens Health Issues*. 2022 Sep-Oct;32(5):484-489. doi: 10.1016/j.whi.2022.03.004. Epub 2022 Apr 28. PMID: 35491347; PMCID: PMC9532354.
24. **Chen S**, **Hoch JS**. Net-benefit regression with censored cost-effectiveness data from randomized or observational studies. *Stat Med*. 2022 Sep 10;41(20):3958-3974. doi: 10.1002/sim.9486. Epub 2022 Jun 3. PMID: 35665527; PMCID: PMC9427707.

25. Cooley JJP, Maguire FB, Morris CR, Parikh-Patel A, **Abrahão R**,\* Chen HA, **Keegan THM**. Cervical Cancer Stage at Diagnosis and Survival among Women ≥65 Years in California. *Cancer Epidemiol Biomarkers Prev*. 2023 Jan 9;32(1):91-97. doi: 10.1158/1055-9965.EPI-22-0793. PMID: 36620897
26. DiLosa K, Brown C, Rajasekar G, **Nuno M, Humphries MD**. Provider ankle brachial index and wound classification teaching as part of a comprehensive limb preservation outreach program. *J Vasc Surg*. 2022 Dec 21:S0741-5214(22)02646-5. doi: 10.1016/j.jvs.2022.12.025. Epub ahead of print. PMID: 36565782.
27. DiLosa K, Gibson K, **Humphries MD**. The use of telemedicine in peripheral artery disease and limb salvage. *Semin Vasc Surg*. 2023 Mar;36(1):122-128. doi: 10.1053/j.semvascsurg.2022.12.006. Epub 2023 Jan 2. PMID: 36958893
28. Dorvil N, Rivera VR, Riviere C, Berman R, Severe P, **Bang H**, Lavoile K, Devieux JG, Faustin M, Saintyl G, Mendicuti MD, Pierre S, Apollon A, Dumond E, Forestal GPL, Rouzier V, Marcelin A, McNairy ML, Walsh KF, Dupnik K, Reif LK, Byrne AL, Bousleiman S, Orvis E, Joseph P, Cremieux PY, Pape JW, Koenig SP. Same-day testing with initiation of antiretroviral therapy or tuberculosis treatment versus standard care for persons presenting with tuberculosis symptoms at HIV diagnosis: A randomized open-label trial from Haiti. *PLoS Med*. 2023 Jun 9;20(6):e1004246. doi: 10.1371/journal.pmed.1004246. eCollection 2023 Jun. PMID: 37294843
29. **Dove MS**, Leistikow BN, Khan N, **Tong EK**. Current Smoking and Risk of Coronavirus Infection and Illness in a Highly Controlled Challenge Study: A Re-analysis of the British Cold Study. *Nicotine Tob Res*. 2022 Oct 4:ntac148. doi: 10.1093/ntr/ntac148. Epub ahead of print. PMID: 36194540; PMCID: PMC9619420.
30. **Dove MS**,\* Gee K, **Tong EK**. Flavored Tobacco Sales Restrictions and Teen E-cigarette Use: Quasi-experimental Evidence From California. *Nicotine Tob Res*. 2023 Jan 1;25(1):127-134. doi: 10.1093/ntr/ntac200. PMID: 35983929
31. **Dove MS**,\* Leistikow BN, Khan N, **Tong EK**. Current Smoking and Risk of Coronavirus Infection and Illness in a Highly Controlled Challenge Study: A Re-analysis of the British Cold Study. *Nicotine Tob Res*. 2023 May 22;25(6):1198-1201. doi: 10.1093/ntr/ntac148. PMID: 36194540
32. Elder NM, Mumma BE, Maeda MY, **Tancredi DJ**, Tyler KR. Emergency Department Length of Stay Is Associated with Delirium in Older Adults. *West J Emerg Med*. 2023 May 3;24(3):532-537. doi: 10.5811/westjem.59383. PMID: 37278803
33. Fang J, Silva RM, **Tancredi DJ**, Pinkerton KE, Sankaran D. Examining associations in congenital syphilis infection and socioeconomic factors between California's small-to-medium and large metro counties. *J Perinatol*. 2022 Nov;42(11):1434-1439. doi: 10.1038/s41372-022-01445-y. Epub 2022 Jun 23. PMID: 35739308.
34. Fields BE, Whitney RL, **Bell JF**. Home Oxygen Therapy: Assisting and educating caregivers and those receiving supplemental oxygen. *Home Healthc Now*. 2022 Jul-Aug 01;40(4):182-189. doi: 10.1097/NHH.0000000000001085. PMID: 35777938.
35. Fields BE, Whitney RL, **Bell JF**. Using a Mechanical Lift at Home: Preparing family caregivers to use lifts for transfers. *Home Healthc Now*. 2022 Jul-Aug 01;40(4):190-195. doi: 10.1097/NHH.0000000000001084. PMID: 35777939.
36. Fiore MC, Smith SS, Adsit RT, Bolt DM, Conner KL, Bernstein SL, Eng OD, Lazuk D, Gonzalez A, Jorenby DE, D'Angelo H, Kirsch JA, Williams B, Nolan MB, Hayes-Birchler T, Kent S, Kim H, Piasecki TM, Slutske WS, Lubanski S, Yu M, Suk Y, Cai Y, Kashyap N, Mathew JP, McMahan G, Rolland B, Tindle HA, Warren GW, An LC, Boyd AD, Brunzell DH, Carrillo V, Chen LS, Davis JM, Dilip D, Ellerbeck EF, Iturrate E, Jose T, Khanna N, King A, Klass E, Newman M, Shoenbill KA, **Tong E**, Tsoh JY, Wilson KM, Theobald WE, Baker TB. The first 20 months of the COVID-19 pandemic: Mortality, intubation and ICU rates among 104,590 patients hospitalized at 21 United States health systems.

PLoS One. 2022 Sep 28;17(9):e0274571. doi: 10.1371/journal.pone.0274571. PMID: 36170336; PMCID: PMC9518859.

37. Florin TA, **Melnikow J**, **Gosdin M**,\*\* **Ciuffetelli R**,\*\* Benedetti J, Ballard D, Gausche-Hill M, Kronman MP, Martin LA, Mistry RD, Neuman MI, Palazzi DL, Patel SJ, Self WH, Shah SS, Shah SN, Sirota S, Cruz AT, Ruddy R, Gerber JS, **Kuppermann N**. Developing Consensus on Clinical Outcomes for Children with Mild Pneumonia: A Delphi Study. *J Pediatric Infect Dis Soc*. 2023 Feb 27;12(2):83-88. doi:10.1093/jpids/piac123. PMID: 36625856
38. Forchuk C, Rudnick A, Corring D, Lizotte D, **Hoch JS**, Booth R, Frampton B, Mann R, Serrato J. A Smart Technology Intervention in the Homes of People with Mental Illness and Physical Comorbidities. *Sensors (Basel)*. 2022 Dec 30;23(1):406. doi: 10.3390/s23010406. PMID: 36617004; PMCID: PMC9823432.
39. Ford JS, Rouleau SG, Wagner JL, Adams CB, **May LS**, Parikh AK, **Holmes JF**. Assessment of a COVID-19 vaccination protocol for unhoused patients in the emergency department. *Vaccine*. 2023 Feb 24;41(9):1611-1615. doi: 10.1016/j.vaccine.2022.12.063. Epub 2023 Jan 2. PMID: 36732166
40. French CD, Shafique MA, **Bang H**, Matias SL. Perinatal Hospital Practices Are Associated with Breastfeeding through 5 Months Postpartum among Women and Infants from Low-Income Households. *J Nutr*. 2023 Jan;153(1):322-330. doi: 10.1016/j.tjnut.2022.11.007. Epub 2022 Dec 20. PMID: 36913468
41. Funk AL, **Kuppermann N**, Florin TA, **Tancredi DJ**, Xie J, Kim K, Finkelstein Y, Neuman MI, Salvadori MI, Yock-Corrales A, Breslin KA, Ambroggio L, Chaudhari PP, Bergmann KR, Gardiner MA, Nebhrajani JR, Campos C, Ahmad FA, Sartori LF, Navanandan N, Kannikeswaran N, Caperell K, Morris CR, Mintegi S, Gangoiti I, Sabhaney VJ, Plint AC, Klassen TP, Avva UR, Shah NP, Dixon AC, Lunoe MM, Becker SM, Rogers AJ, Pavlicich V, Dalziel SR, Payne DC, Malley R, Borland ML, Morrison AK, Bhatt M, Rino PB, Beneyto Ferre I, Eckerle M, Kam AJ, Chong SL, Palumbo L, Kwok MY, Cherry JC, Poonai N, Waseem M, Simon NJ, Freedman SB; Pediatric Emergency Research Network–COVID-19 Study Team. Post-COVID-19 Conditions Among Children 90 Days After SARS-CoV-2 Infection. *JAMA Netw Open*. 2022 Jul 1;5(7):e2223253. doi: 10.1001/jamanetworkopen.2022.23253. Erratum in: *JAMA Netw Open*. 2022 Aug 1;5(8):e2231131. PMID: 35867061; PMCID: PMC9308058.
42. Gaffey AC, Chou EL, Shames ML, **Humphries M**, Velazquez GA, Sachdev-Ost U, Robinson WP, Singh N. Vascular trainee perceptions of diversity, equity, and inclusion within United States vascular surgery training programs. *J Vasc Surg*. 2022 Aug;76(2):572-578.e2. doi: 10.1016/j.jvs.2022.03.871. Epub 2022 Apr 2. PMID: 35378246.
43. Glasier A, Edelman A, Creinin MD, Brache V, Westhoff CL, Han L, **Chen MJ**, Hemon A. The effect of deliberate non-adherence to a norgestrel progestin-only pill: A randomized, crossover study. *Contraception*. 2023 Jan;117:1-6. doi: 10.1016/j.contraception.2022.09.002. Epub 2022 Sep 18. PMID: 36130667.
44. Gold EB, **Xing G**\*\* , Avis NE, Harlow S, Joffe H, Matthews K, Pavlovic JM, Thurston RC, **Waetjen E**. The longitudinal relation of inflammation to incidence of vasomotor symptoms. *Menopause*. 2022 Aug 1;29(8):894-904. doi: 10.1097/GME.0000000000002005. PMID: 35905469; PMCID: PMC9346702.
45. Goldberg M, McDonald JA, Houghton LC, Andrulis IL, Knight JA, Bradbury AR, Schwartz LA, Buys SS, Frost CJ, Daly MB, John EM, **Keegan THM**, Chung WK, Wei Y, Terry MB. Maternal and prenatal factors and age at thelarche in the LEGACY Girls Study cohort: implications for breast cancer risk. *Int J Epidemiol*. 2023 Feb 8;52(1):272-283. doi: 10.1093/ije/dyac108. PMID: 35613015
46. Goodson DA, Chalupsky MR, Wiegley N, Huang Y, Chiu M, **Bang H**, Roshanravan B, Young BY, Chen LX. GFR Estimation in Potential Living Kidney Donors: Race- and Nonrace-based Equations

- and Measured GFR. *Kidney Med.* 2022 Oct 14;4(12):100558. doi: 10.1016/j.xkme.2022.100558. PMID: 36471819; PMCID: PMC9719087.
47. Gotthardt CJ, **Haynes SC**,\* Sharma S, Yellowlees PM, Luce MS, **Marcin JP**. Patient Satisfaction with Care Providers During the COVID-19 Pandemic: An Analysis of Consumer Assessment of Healthcare Providers and Systems Survey Scores for In-Person and Telehealth Encounters at an Academic Medical Center. *Telemed J E Health.* 2023 Jan 3. doi: 10.1089/tmj.2022.0460. Online ahead of print. PMID: 36595515
  48. Gribben V, Kosack A, Garell C, **Shaikh U**, Huang M, Chang AY, Rasmussen J, Tebb K, Marbin J. Impacts of a Multicenter Medical Education Curriculum for Training Pediatric Residents on Tobacco Cessation for Adult Caregivers of Pediatric Patients. *Clin Pediatr (Phila).* 2023 Feb;62(2):115-120. doi: 10.1177/00099228221113783. Epub 2022 Jul 26. PMID: 35891607.
  49. Gribben V, Kosack A, Garell C, **Shaikh U**, Huang M, Chang AY, Rasmussen J, Tebb K, Marbin J. Impacts of a Multicenter Medical Education Curriculum for Training Pediatric Residents on Tobacco Cessation for Adult Caregivers of Pediatric Patients. *Clin Pediatr (Phila).* 2023 Feb;62(2):115-120. doi: 10.1177/00099228221113783. Epub 2022 Jul 26. PMID: 35891607
  50. Guggenbickler AM, Barr HK, **Hoch JS**, Dewa CS. Rapid Review of Real-World Cost-Effectiveness Analyses of Cancer Interventions in Canada. *Curr Oncol.* 2022 Sep 30;29(10):7285-7304. doi: 10.3390/curroncol29100574. PMID: 36290851; PMCID: PMC9600856.
  51. Han L, Creinin MD, Hemon A, Glasier A, **Chen MJ**, Edelman A. Mechanism of action of a 0.075 mg norgestrel progestogen-only pill 2. Effect on cervical mucus and theoretical risk of conception. *Contraception.* 2022 Aug;112:43-47. doi: 10.1016/j.contraception.2022.03.016. Epub 2022 Mar 31. PMID: 35367204.
  52. Harris MI, Adelgais KM, Linakis SW, Magill CF, Brazauskas R, Shah MI, **Nishijima DK**, Lowe GS, Chadha K, Chang TP, Lerner EB, Leonard JC, Schwartz HP, Gaither JB, Studnek JR, Browne LR. Impact of Prehospital Pain Management on Emergency Department Management of Injured Children. *Prehosp Emerg Care.* 2023;27(1):1-9. doi: 10.1080/10903127.2021.2000683. Epub 2021 Dec 22. PMID: 34734787
  53. Hartmann JA, Nelson B, Amminger GP, Spark J, Yuen HP, Kerr MJ, Polari A, Wallis N, Blasioli J, Dixon L, Carter C, Loewy R, **Niendam TA**, Shumway M, McGorry PD. Baseline data of a sequential multiple assignment randomized trial (STEP study). *Early Interv Psychiatry.* 2022 Oct;16(10):1130-1142. doi: 10.1111/eip.13263. Epub 2022 Jan 30. PMID: 35098659; PMCID: PMC9795376.
  54. **Haynes SC**\*, Kamerman-Kretzmer R, Khan SS, **Crossen S**, Lieng MK, **Marcin JP**, Kenyon NJ, Kim CH. Telemedicine use for pediatric asthma care: a mixed methods study. *J Asthma.* 2022 Dec;59(12):2431-2440. doi: 10.1080/02770903.2021.2019265. Epub 2022 Jan 3. PMID: 34913803.
  55. **Haynes SC**\*, **Marcin JP**. Pediatric Telemedicine: Lessons Learned During the Coronavirus Disease 2019 Pandemic and Opportunities for Growth. *Adv Pediatr.* 2022 Aug;69(1):1-11. doi: 10.1016/j.yapd.2022.04.002. Epub 2022 Apr 5. PMID: 35985702; PMCID: PMC8979775.
  56. **Haynes SC**\*, **Marcin JP**, Dayal P, **Tancredi DJ**, **Crossen S**. Impact of telemedicine on visit attendance for paediatric patients receiving endocrinology specialty care. *J Telemed Telecare.* 2023 Feb;29(2):126-132. doi: 10.1177/1357633X20972911. Epub 2020 Nov 23. PMID: 33226895
  57. Hellesen S, Bankston-Lee K, Maytum C, **Tong EK**. Strategies and lessons learned for smoke and Tobacco-Free policy change on community colleges with community-based support. *J Am Coll Health.* 2022 Nov-Dec;70(8):2406-2415. doi: 10.1080/07448481.2020.1865972. Epub 2021 Jan 31. PMID: 33522464.
  58. **Henry SG**, **Fenton JJ**, Campbell CI, Sullivan M, **Weinberg G**\*\*, Naz H, Graham WM, Dossett ML, **Kravitz RL**. Development and Testing of a Communication Intervention to Improve Chronic Pain Management in Primary Care: A Pilot Randomized Clinical Trial. *Clin J Pain.* 2022 Oct 1;38(10):620-631. doi: 10.1097/AJP.0000000000001064. PMID: 36037051; PMCID: PMC9481730.

59. Hill C, **Tancredi DJ**, Cifelli CJ, Slavin JL, Gahche J, Marco ML, Hutkins R, Fulgoni VL 3rd, Merenstein D, Sanders ME. Positive Health Outcomes Associated with Live Microbe Intake from Foods, Including Fermented Foods, Assessed using the NHANES Database. J Nutr. 2023 Apr;153(4):1143-1149. doi: 10.1016/j.tjnut.2023.02.019. Epub 2023 Feb 22. PMID: 36822397
60. Hill KA, Desai MM, Chaudhry SI, **Fancher T**, Nguyen M, Wang K, Boatright D. National Institutes of Health Diversity Supplement Awards by Medical School. J Gen Intern Med. 2022 Nov 7. doi: 10.1007/s11606-022-07849-y. Epub ahead of print. PMID: 36344641.
61. Hill KA, Desai MM, Chaudhry SI, Nguyen M, McDade W, Xu Y, Li F, **Fancher T**, Hajduk AM, Westervelt MJ, Boatright D. Association of Marginalized Identities With Alpha Omega Alpha Honor Society and Gold Humanism Honor Society Membership Among Medical Students. JAMA Netw Open. 2022 Sep 1;5(9):e2229062. doi: 10.1001/jamanetworkopen.2022.29062. PMID: 36069984; PMCID: PMC9453541.
62. **Hoch JS**, Barr HK, Guggenbickler AM, Dewa CS. Lessons from Cost-Effectiveness Analysis of Smoking Cessation Programs for Cancer Patients. Curr Oncol. 2022 Sep 26;29(10):6982-6991. doi: 10.3390/curroncol29100549. PMID: 36290826; PMCID: PMC9600008.
63. **Hood-Medland EA, Dove MS, Tong EK**. Assessment and Counseling Gaps Among Former Smokers Eligible for Lung Cancer Screening in US Adults : A Cross-Sectional Analysis of National Health and Nutrition Examination Surveys (NHANES), 2013-2018. J Gen Intern Med. 2022 Aug;37(11):2711-2718. doi: 10.1007/s11606-022-07542-0. Epub 2022 Apr 26. PMID: 35474503; PMCID: PMC9411270.
64. Howe RJ, **Bell JF**, Bidwell JT, **Fenton JJ**, Amadi GP, **Agnoli AL**. Association of social isolation and loneliness with telehealth use among older adults during COVID-19. J Am Geriatr Soc. 2023 Feb 2. doi: 10.1111/jgs.18270. Online ahead of print. PMID: 36734047
65. **Hoyt-Austin AE**, Cheng JH, Moua H, **Tancredi DJ**, Chantry CJ, **Kair LR**. Providing Low-Income Women With a Manual Pump: A Pilot Study. Hosp Pediatr. 2023 Feb 1;13(2):115-124. doi: 10.1542/hpeds.2021-006380. PMID: 36646639
66. **Hoyt-Austin AE**, Miller IT, Kuhn-Riordon KM, **Rosenthal JL**, Chantry CJ, **Marcin JP**, Hoffman KR, **Kair LR**. Bonding, Relaxation, Separation, and Connection: Expressing Human Milk While Videoconferencing with the Hospitalized Premature Infant. Breastfeed Med. 2022 Aug;17(8):653-659. doi: 10.1089/bfm.2021.0214. Epub 2022 May 23. PMID: 35605051; PMCID: PMC9464082.
67. Hua JPY, Loewy RL, Stuart B, Fryer SL, **Niendam TA**, Carter CS, Vinogradov S, Mathalon DH. Cortical and subcortical brain morphometry abnormalities in youth at clinical high-risk for psychosis and individuals with early illness schizophrenia. Psychiatry Res Neuroimaging. 2023 Jul;332:111653. doi: 10.1016/j.psychresns.2023.111653. Epub 2023 Apr 25. PMID: 37121090
68. Janko MR, Hubbard G, Back M, Shah SK, Pomozi E, Szeberin Z, DeMartino R, Wang LJ, Crofts S, Belkin M, Davila VJ, Lemmon GW, Wang SK, Czerny M, Kreibich M, **Humphries MD**, Shutze W, Joh JH, Cho S, Behrendt CA, Setacci C, Hacker RI, Sobreira ML, Yoshida WB, D'Oria M, Lepidi S, Chiesa R, Kahlberg A, Go MR, Rizzo AN, Black JH, Magee GA, Elsayed R, Baril DT, Beck AW, McFarland GE, Gavali H, Wanhainen A, Kashyap VS, Stoecker JB, Wang GJ, Zhou W, Fujimura N, Obara H, Wishy AM, Bose S, Smeds M, Liang P, Schermerhorn M, Conrad MF, Hsu JH, Patel R, Lee JT, Liapis CD, Moulakakis KG, Farber MA, Motta F, Ricco JB, Bath J, Coselli JS, Aziz F, Coleman DM, Davis FM, Fatima J, Irshad A, Shalhub S, Kakkos S, Zhang Q, Lawrence PF, Woo K, Chung J. In-situ bypass is associated with superior infection-free survival compared with extra-anatomic bypass for the management of secondary aortic graft infections without enteric involvement. J Vasc Surg. 2022 Aug;76(2):546-555.e3. doi: 10.1016/j.jvs.2022.03.869. Epub 2022 Apr 23. PMID: 35470015.
69. Jensen JT, Kaunitz AM, Achilles SL, Zatik J, Weyers S, Piltonen T, Suturina L, Apolikhina I, Bouchard C, **Chen MJ**, Apter D, Jost M, Foidart JM, Creinin MD. Pooled efficacy results of estetrol/drospirenone combined oral contraception phase 3 trials. Contraception. 2022 Dec;116:37-43. doi: 10.1016/j.contraception.2022.07.009. Epub 2022 Jul 31. PMID: 35921870.

70. **Jerant A**, Duberstein PR, **Kravitz RL**, Kleiman EM, Rizvi SL, **Cipri C\*\***, Liu D, Scher L, Freitas M, Jones-Hill M, Oravetz A, Van Orden KA, **Franks P**. Ethical and methodological challenges slowing progress in primary care-based suicide prevention: Illustrations from a randomized controlled trial and guidance for future research. J Psychiatr Res. 2022 Oct;154:242-251. doi: 10.1016/j.jpsychires.2022.07.038. Epub 2022 Aug 6. PMID: 35961180.
71. Kahn JM, Zhang X, Kahn AR, Castellino SM, Neugut AI, Schymura MJ, Boscoe FP, **Keegan THM**. Racial Disparities in Children, Adolescents, and Young Adults with Hodgkin Lymphoma Enrolled in the New York State Medicaid Program. J Adolesc Young Adult Oncol. 2022 Aug;11(4):360-369. doi: 10.1089/jayao.2021.0131. Epub 2021 Oct 8. PMID: 34637625; PMCID: PMC9419970.
72. Karcher NR, Hicks R, Schiffman J, Asarnow JR, Calkins ME, Dauberman JL, Garrett CD, Koli RL, Larrauri CA, Loewy RL, McGough CA, Murphy JM, **Niendam TA**, Roaten K, Rodriguez J, Staglin BK, Wissow L, Woodberry KA, Young JF, Gur RE, Bearden CE, Barch DM. Youth Mental Health Screening and Linkage to Care. Psychiatr Serv. 2023 Jan 25;appips202200008. doi: 10.1176/appi.ps.202200008. Online ahead of print. PMID: 36695011
73. **Karlin J**, Hodge CC. Intimacy, Anonymity, and "Care with Nothing in the Way" on an Abortion Hotline. Cult Med Psychiatry. 2022 Nov 28:1–27. doi: 10.1007/s11013-022-09810-4. Epub ahead of print. PMID: 36441388; PMCID: PMC9707088.
74. **Karlin J**, Joffe C. Self-Sourced Medication Abortion, Physician Authority, and the Contradictions of Abortion Care. J Health Polit Policy Law. 2023 Jan 23:10449932. doi: 10.1215/03616878-10449932. Online ahead of print. PMID: 36693174
75. Kaunitz AM, Achilles SL, Zatik J, Weyers S, Piltonen T, Suturina L, Apolikhina I, Bouchard C, **Chen MJ**, Jensen JT, Westhoff CL, Jost M, Foidart JM, Creinin MD. Pooled analysis of two phase 3 trials evaluating the effects of a novel combined oral contraceptive containing estetrol/drospirenone on bleeding patterns in healthy women. Contraception. 2022 Dec;116:29-36. doi: 10.1016/j.contraception.2022.07.010. Epub 2022 Aug 1. PMID: 35921872.
76. **Keegan THM**, Brunson A, Cooley JJP, Schonfeld SJ, Meyer CL, Valcarcel B, **Abraham R**, **Wun T**, Auletta J, Muffly L, Morton LM. Linking the Center for International Blood and Marrow Transplant Research Registry to the California Cancer Registry and California Hospital Patient Discharge Data. Transplant Cell Ther. 2022 Dec;28(12):859.e1-859.e10. doi: 10.1016/j.jtct.2022.09.016. Epub 2022 Sep 27. PMID: 36174935.
77. Keeton VF, **Bell JF**, Gottlieb LM, Drake C, Pantell M, Hessler D, Wing H, **Fernandez Y Garcia EO**. Social Needs and Acculturation as Predictors of Emotional Problems and Perceived Stress Among Latinx Mothers with Low Income. J Immigr Minor Health. 2022 Nov 24:1–10. doi: 10.1007/s10903-022-01430-9. Epub ahead of print. PMID: 36422792; PMCID: PMC9686253.
78. Keeton VF, **Bell JF**, Drake C, **Fernandez Y Garcia EO**,\* Pantell M, Hessler D, Wing H, Silveira PP, O'Donnell KJ, de Mendonça Filho EJ, Meaney MJ, Gottlieb LM. Household Social Needs, Emotional Functioning, and Stress in Low-Income Latinx Children and their Mothers. J Child Fam Stud. 2023 Mar;32(3):796-811. doi: 10.1007/s10826-023-02532-0. Epub 2023 Jan 19. PMID: 37143480
79. Kerlikowske K, Bissell MCS, Sprague BL, Tice JA, Tossas KY, Bowles EJA, Ho TH, **Keegan THM**, **Miglioretti DL**. Impact of BMI on Prevalence of Dense Breasts by Race and Ethnicity. Cancer Epidemiol Biomarkers Prev. 2023 Jun 7:OF1-OF7. doi: 10.1158/1055-9965.EPI-23-0049. Online ahead of print. PMID: 37284771
80. Kim J, Aryee LMD, **Bang H**, Prajogo S, Choi YK, **Hoch JS**, Prado EL. Effectiveness of Digital Mental Health Tools to Reduce Depressive and Anxiety Symptoms in Low- and Middle-Income Countries: Systematic Review and Meta-analysis. JMIR Ment Health. 2023 Mar 20;10:e43066. doi: 10.2196/43066. PMID: 36939820
81. Kim J, Linos E, Fishman DA, **Dove MS**,\* **Hoch JS**, **Keegan TH**. Factors Associated with Online Patient-Provider Communications Among Cancer Survivors in the United States during COVID: A



- Cross-Sectional Study. JMIR Cancer. 2023 Apr 17. doi: 10.2196/44339. Online ahead of print. PMID: 37074951
82. Kimchi A, Aronow HU, Ni YM, Ong MK, Mirocha J, Black JT, Auerbach AD, Ganiats TG, Greenfield S, **Romano PS**, Kedan I; BEAT-HF Research Group. Postdischarge Noninvasive Telemonitoring and Nurse Telephone Coaching Improve Outcomes in Heart Failure Patients With High Burden of Comorbidity. J Card Fail. 2022 Dec 13:S1071-9164(22)01221-0. doi: 10.1016/j.cardfail.2022.11.012. Epub ahead of print. PMID: 36521727.
  83. Kimchi A, Aronow HU, Ni YM, Ong MK, Mirocha J, Black JT, Auerbach AD, Ganiats TG, Greenfield S, **Romano PS**, Kedan I; BEAT-HF Research Group. Postdischarge Noninvasive Telemonitoring and Nurse Telephone Coaching Improve Outcomes in Heart Failure Patients With High Burden of Comorbidity. J Card Fail. 2023 May;29(5):774-783. doi: 10.1016/j.cardfail.2022.11.012. Epub 2022 Dec 13. PMID: 36521727
  84. Kiuru M, Li Q, Zhu G, Terrell JR, Beroukhim K, Maverakis E, **Keegan THM**. Melanoma in women of childbearing age and in pregnancy in California, 1994-2015: a population-based cohort study. J Eur Acad Dermatol Venereol. 2022 Nov;36(11):2025-2035. doi: 10.1111/jdv.18458. Epub 2022 Aug 23. PMID: 35870141; PMCID: PMC9560982.
  85. Kleber KT, Kravitz-Wirtz N, **Buggs SL**, Adams CM, Sardo AC, **Hoch JS**, Brown IE. Emergency department visit patterns in the recently discharged, violently injured patient: Retrospective cohort review. Am J Surg. 2023 Jan;225(1):162-167. doi: 10.1016/j.amjsurg.2022.07.005. Epub 2022 Jul 20. PMID: 35871849.
  86. Kleber KT, Kravitz-Wirtz N, **Buggs SL**, Adams CM, Sardo AC, **Hoch JS**, Brown IE. Emergency department visit patterns in the recently discharged, violently injured patient: Retrospective cohort review. Am J Surg. 2023 Jan;225(1):162-167. doi: 10.1016/j.amjsurg.2022.07.005. Epub 2022 Jul 20. PMID: 35871849
  87. Kravitz-Wirtz N, Bruns A, Aubel AJ, Zhang X, **Buggs SA**. Inequities in Community Exposure to Deadly Gun Violence by Race/Ethnicity, Poverty, and Neighborhood Disadvantage among Youth in Large US Cities. J Urban Health. 2022 Aug;99(4):610-625. doi: 10.1007/s11524-022-00656-0. Epub 2022 Jun 7. PMID: 35672546; PMCID: PMC9172977.
  88. Kwong M, Rajasekar G, **Utter GH**, **Nuño M**, Mell MW. Poor Utilization of Palliative Care Amongst Medicare Patients with Chronic Limb Threatening Ischemia. J Vasc Surg. 2023 Apr 21:S0741-5214(23)00541-4. doi: 10.1016/j.jvs.2023.02.023. Online ahead of print. PMID: 37088446
  89. Kwong M, Rajasekar G, **Utter GH**, **Nuño M**, Mell MW. Updated estimates for the burden of chronic limb-threatening ischemia in the Medicare population. J Vasc Surg. 2023 Jun;77(6):1760-1775. doi: 10.1016/j.jvs.2023.01.200. Epub 2023 Feb 8. PMID: 36758910
  90. Langer CE, Armitage TL, Beckman S, **Tancredi DJ**, Mitchell DC, Schenker MB. How does environmental temperature affect farmworkers' work rates in the California Heat Illness Prevention Study (CHIPS)? J Occup Environ Med. 2023 Apr 5. doi: 10.1097/JOM.0000000000002853. Online ahead of print. PMID: 37026741
  91. Lerner EB, Browne LR, Studnek JR, Mann NC, Dai M, Hoffman CK, Pilkey D, Adelgais KM, Brown KM, Gaither JB, Leonard JC, Martin-Gill C, **Nishijima DK**, Owusu Ansah S, Shah ZS, Shah MI. A Novel Use of NEMSIS to Create a PECARN-Specific EMS Patient Registry. Prehosp Emerg Care. 2022 Jul-Aug;26(4):484-491. doi: 10.1080/10903127.2021.1951407. Epub 2021 Jul 27. PMID: 34232828.
  92. Lulla A, Lumba-Brown A, Totten AM, Maher PJ, Badjatia N, Bell R, Donayri CTJ, Fallat ME, Hawryluk GWJ, Goldberg SA, Hennes HMA, Ignell SP, Ghajar J, Krzyzaniak BP, Lerner EB, **Nishijima D**, Schleien C, Shackelford S, Swartz E, Wright DW, Zhang R, Jagoda A, Bobrow BJ. Prehospital Guidelines for the Management of Traumatic Brain Injury - 3rd Edition. Prehosp Emerg Care. 2023 Apr 20:1-32. doi: 10.1080/10903127.2023.2187905. Online ahead of print. PMID: 37079803

93. **Magnan EM, Tancredi DJ, Xing G,\*\* Agnoli A, Jerant A, Fenton JJ.** Association Between Opioid Tapering and Subsequent Health Care Use, Medication Adherence, and Chronic Condition Control. JAMA Netw Open. 2023 Feb 1;6(2):e2255101. doi: 10.1001/jamanetworkopen.2022.55101. PMID: 36749586
94. Maguire FB, Movsisyan AS, Morris CR, Parikh-Patel A, **Keegan THM, Tong EK.** Evaluation of Cancer Deaths Attributable to Tobacco in California, 2014-2019. JAMA Netw Open. 2022 Dec 1;5(12):e2246651. doi: 10.1001/jamanetworkopen.2022.46651. PMID: 36515948.
95. Mahajan A, Brunson A, Eldredge J, White RH, **Keegan THM, Wun T.** Incidence and Outcomes Associated with 6,841 Isolated Distal Deep Vein Thromboses in Patients with 13 Common Cancers. Thromb Haemost. 2022 Aug;122(8):1407-1414. doi: 10.1055/a-1742-0177. Epub 2022 Jan 17. PMID: 35038763.
96. Manoukian MAC, **Tancredi DJ,** Linvill MT, Wynia EH, Beaver B, Rose JS, Mumma BE. Manual versus Mechanical Delivery of High-Quality Cardiopulmonary Resuscitation on a River-Based Fire Rescue Boat. Prehosp Disaster Med. 2022 Oct;37(5):630-637. doi: 10.1017/S1049023X22001042. Epub 2022 Jul 25. PMID: 35875994; PMCID: PMC9470525.
97. Manske MCB, Wilson MD, Wise BL, **Melnikow J,** Hedriana HL, James MA, **Tancredi DJ.** Maternal Epidemiology of Brachial Plexus Birth Injuries in California: 1996 to 2012. Am J Perinatol. 2023 Jun 27. doi: 10.1055/a-2097-1358. Online ahead of print. PMID: 37216973
98. **Marcin JP,** Sauers-Ford HS, Mouzoon JL, **Haynes SC,\*** Dayal P, Sigal I, **Tancredi D,** Lieng MK, **Kuppermann N.** Impact of Tele-Emergency Consultations on Pediatric Interfacility Transfers: A Cluster-Randomized Crossover Trial. JAMA Netw Open. 2023 Feb 1;6(2):e2255770. doi: 10.1001/jamanetworkopen.2022.55770. PMID: 36780158
99. **Marcin JP, Tancredi DJ,** Galante JM, Rinderknecht TN, Haus BM, Leshikar HB, Zwieneberg M, **Rosenthal JL,** Grether-Jones KL, Hamline MY, **Hoch JS, Kuppermann N.** Measuring the impact of a "Virtual Pediatric Trauma Center" (VPTC) model of care using telemedicine for acutely injured children versus the standard of care: study protocol for a prospective stepped-wedge trial. Trials. 2022 Dec 27;23(1):1051. doi: 10.1186/s13063-022-06996-1. PMID: 36575536; PMCID: PMC9793356.
100. Marco ML, Hutkins R, Hill C, Fulgoni VL, Cifelli CJ, Gahche J, Slavin JL, Merenstein D, **Tancredi DJ,** Sanders ME. A Classification System for Defining and Estimating Dietary Intake of Live Microbes in US Adults and Children. J Nutr. 2022 Jul 6;152(7):1729-1736. doi: 10.1093/jn/nxac074. PMID: 35583208; PMCID: PMC9258558.
101. Mark J, **Cooke DT,** Suri A, Huynh TT, Yoon PS, **Humphries MD.** Patient and provider perspectives to utilization of telemedicine in surgery. Digit Health. 2023 Feb 14;9:20552076231152756. doi: 10.1177/20552076231152756. eCollection 2023 Jan-Dec. PMID: 36818156
102. Matias SL, Riden HE, Lee DS, **Bang H,** Schenker MB. Effectiveness of a worksite lifestyle intervention to reduce BMI among farmworkers in California: a cluster randomised controlled trial. Public Health Nutr. 2022 Sep;25(9):2651-2659. doi: 10.1017/S136898002200129X. Epub 2022 May 27. PMID: 35620920; PMCID: PMC9378459.
103. McCord C, Ullrich F, Merchant KAS, Bhagianadh D, Carter KD, Nelson E, **Marcin JP,** Law KB, Neufeld J, Giovanetti A, Ward MM. Comparison of in-person vs. telebehavioral health outcomes from rural populations across America. BMC Psychiatry. 2022 Dec 10;22(1):778. doi: 10.1186/s12888-022-04421-0. PMID: 36496352; PMCID: PMC9736702.
104. McGorry PD, Mei C, Amminger GP, Yuen HP, Kerr M, Spark J, Wallis N, Polari A, Baird S, Buccilli K, Dempsey SA, Ferguson N, Formica M, Krcmar M, Quinn AL, Mebrahtu Y, Ruslins A, Street R, Wannan C, Dixon L, Carter C, Loewy R, **Niendam TA,** Shumway M, Nelson B. A Sequential Adaptive Intervention Strategy Targeting Remission and Functional Recovery in Young People at Ultrahigh Risk of Psychosis: The Staged Treatment in Early Psychosis (STEP) Sequential Multiple Assignment Randomized Trial. JAMA Psychiatry. 2023 Jun 28. doi: 10.1001/jamapsychiatry.2023.1947. Online ahead of print. PMID: 37378974

105. Merenstein D, Pot B, Leyer G, Ouwehand AC, Preidis GA, Elkins CA, Hill C, Lewis ZT, Shane AL, Zmora N, Petrova MI, Collado MC, Morelli L, Montoya GA, Szajewska H, **Tancredi DJ**, Sanders ME. Emerging issues in probiotic safety: 2023 perspectives. *Gut Microbes.* 2023 Jan-Dec;15(1):2185034. doi: 10.1080/19490976.2023.2185034. PMID: 36919522
106. Mitro SD, **Waeljen LE**, Hedderson MM. Fibroids and vitamin D: another piece of the puzzle. *Fertil Steril.* 2022 Dec;118(6):1137-1138. doi: 10.1016/j.fertnstert.2022.10.005. Epub 2022 Nov 4. PMID: 36344288.
107. Movsisyan AS, Nasser K, **Keegan TH.** Construction of the Armenian Surname List (ASL) for public health research. *BMC Med Res Methodol.* 2023 Jan 28;23(1):29. doi: 10.1186/s12874-023-01848-1. PMID: 36709252
108. Muffly L, Yin J, Jacobson S, Wall A, Quiroz E, Advani AS, Luger SM, Tallman MS, Litzow MR, Foster MC, Erba HP, Appelbaum FR, Larson RA, **Keegan THM**, Stock W. Disparities in trial enrollment and outcomes of Hispanic adolescent and young adult acute lymphoblastic leukemia. *Blood Adv.* 2022 Jul 26;6(14):4085-4092. doi: 10.1182/bloodadvances.2022007197. PMID: 35838753; PMCID: PMC9327550.
109. Nagai S, Ogata Y, Yamamoto T, Fedyk M, **Bell JF.** A Longitudinal Study of the Impact of Personal and Professional Resources on Nurses' Work Engagement: A Comparison of Early-Career and Mid-Later-Career Nurses. *Healthcare (Basel).* 2022 Dec 27;11(1):76. doi: 10.3390/healthcare11010076. PMID: 36611536; PMCID: PMC9818952.
110. Namjoshi NS, **Keegan THM**, Li QC, Chung JH, **Rosenthal JL**, Winestone LE, Muffly L, Malogolowkin MH, Alvarez EM. Treatment-related toxicities associated with hospitalization in children, adolescents, and young adults with acute lymphoblastic leukemia: population level analysis. *Leuk Lymphoma.* 2022 Dec;63(13):3191-3199. doi: 10.1080/10428194.2022.2113533. Epub 2022 Aug 23. PMID: 35999808.
111. Nataliansyah MM, Merchant KAS, Croker JA, Zhu X, Mohr NM, **Marcin JP**, Rahmouni H, Ward MM. Managing innovation: a qualitative study on the implementation of telehealth services in rural emergency departments. *BMC Health Serv Res.* 2022 Jul 2;22(1):852. doi: 10.1186/s12913-022-08271-0. PMID: 35780165; PMCID: PMC9250734.
112. Nellis ME, Karam O, Valentine SL, Bateman ST, Remy KE, Lacroix J, Cholette JM, Bembea MM, Russell RT, Steiner ME, Goobie SM, Tucci M, Stricker PA, Stanworth SJ, Delaney M, Lieberman L, Muszynski JA, Bauer DF, Steffen K, **Nishijima D**, Ibla J, Emani S, Vogel AM, Haas T, Goel R, Crighton G, Delgado D, Demetres M, Parker RI; Pediatric Critical Care Transfusion and Anemia Expertise Initiative—Control/Avoidance of Bleeding (TAXI-CAB), in collaboration with the Pediatric Critical Care Blood Research Network (BloodNet), and the Pediatric Acute Lung Injury and Sepsis Investigators (PALISI) Network. Executive Summary of Recommendations and Expert Consensus for Plasma and Platelet Transfusion Practice in Critically Ill Children: From the Transfusion and Anemia Expertise Initiative-Control/Avoidance of Bleeding (TAXI-CAB). *Pediatr Crit Care Med.* 2022 Jan 1;23(1):34-51. doi: 10.1097/PCC.0000000000002851. PMID: 34989711; PMCID: PMC8820267.
113. Neufeld J, Ullrich F, Merchant KAS, Bhagianadh D, Carter KD, **Marcin JP**, Nelson EL, McCord C, Law KB, Ward MM. Change in Drug Use Disorders Identification Test - Consumption (DUDIT-C) with Telehealth Treatment Compared to in-Person Treatment. *Subst Use Misuse.* 2023;58(9):1168-1171. doi: 10.1080/10826084.2023.2212038. Epub 2023 May 22. PMID: 37217828
114. Nguyen M, Chaudhry SI, Desai MM, Chen C, Mason HRC, McDade WA, **Fancher TL**, Boatright D. Association of Sociodemographic Characteristics With US Medical Student Attrition. *JAMA Intern Med.* 2022 Sep 1;182(9):917-924. doi: 10.1001/jamainternmed.2022.2194. PMID: 35816334; PMCID: PMC9274446.

115. Nguyen M, Chaudhry SI, Desai MM, Chen C, McDade WA, **Fancher TL**, Boatright D. Association of Mistreatment and Discrimination With Medical School Attrition. *JAMA Pediatr*. 2022 Sep 1;176(9):935-937. doi: 10.1001/jamapediatrics.2022.1637. PMID: 35639402; PMCID: PMC9157380.
116. Nguyen M, Chaudhry SI, Desai MM, Hajduk AM, McDade WA, **Fancher TL**, Boatright D. Rates of Medical Student Placement Into Graduate Medical Education by Sex, Race and Ethnicity, and Socioeconomic Status, 2018-2021. *JAMA Netw Open*. 2022 Aug 1;5(8):e2229243. doi: 10.1001/jamanetworkopen.2022.29243. PMID: 36018592; PMCID: PMC9419015.
117. Nguyen M, **Fancher T**, Boatright D. Attrition of Indigenous Medical Students Requires Swift Institutional Response-Reply. *JAMA Intern Med*. 2022 Dec 1;182(12):1330-1331. doi: 10.1001/jamainternmed.2022.4936. PMID: 36315138.
118. Nidey N, **Hoyt-Austin A**, **Chen MJ**, Bentley B, Tabb KM, Anyigbo C, Wilder C, Terplan M, McAllister JM, Wexelblatt SL, Murnan A, **Kair LR**. Racial Inequities in Breastfeeding Counseling Among Pregnant People Who Use Cannabis. *Obstet Gynecol*. 2022 Nov 1;140(5):878-881. doi: 10.1097/AOG.0000000000004834. Epub 2022 Oct 5. PMID: 36201781; PMCID: PMC9588485.
119. **Niendam TA**, Loewy R, Savill M, Delucchi KL, Lesh TA, Ragland JD, Bolden K, Skymba HV, Gobrial S, Meyer MS, Pierce KM, Rosenthal A, Fedechko TL, Tully LM, Tryon VL, Goldman H, Cress RD, **Kravitz RL**, Carter CS. Effect of Technology-Enhanced Screening in Addition to Standard Targeted Clinician Education on the Duration of Untreated Psychosis: A Cluster Randomized Clinical Trial. *JAMA Psychiatry*. 2023 Feb 1;80(2):119-126. doi: 10.1001/jamapsychiatry.2022.4436. PMID: 36598770
120. **Nishijima DK**, **Tancredi DJ**, Adelgais KM, Chadha K, Chang TP, Harris MI, Leonard JC, Lerner EB, Linakis SW, Lowe GS, Magill CF, Schwartz HP, Shah MI, Browne LR. Impact of Race and Ethnicity on Emergency Medical Services Administration of Opioid Pain Medications for Injured Children. *J Emerg Med*. 2023 Jan;64(1):55-61. doi: 10.1016/j.jemermed.2022.10.011. Epub 2023 Jan 12. PMID: 36641254
121. Oh J, Bennett DH, **Tancredi DJ**, Calafat AM, Schmidt RJ, Hertz-Picciotto I, Shin HM. Longitudinal Changes in Maternal Serum Concentrations of Per- and Polyfluoroalkyl Substances from Pregnancy to Two Years Postpartum. *Environ Sci Technol*. 2022 Aug 16;56(16):11449-11459. doi: 10.1021/acs.est.1c07970. Epub 2022 Jul 29. PMID: 35904360; PMCID: PMC9798824.
122. Parenti M, Schmidt RJ, Ozonoff S, Shin HM, **Tancredi DJ**, Krakowiak P, Hertz-Picciotto I, Walker CK, Slupsky CM. Maternal Serum and Placental Metabolomes in Association with Prenatal Phthalate Exposure and Neurodevelopmental Outcomes in the MARBLES Cohort. *Metabolites*. 2022 Sep 2;12(9):829. doi: 10.3390/metabo12090829. PMID: 36144233; PMCID: PMC9500898.
123. Parsons SK, **Keegan THM**, Kirchoff AC, Parsons HM, Yabroff KR, Davies SJ. Cost of Cancer in Adolescents and Young Adults in the United States: Results of the 2021 Report by Deloitte Access Economics, Commissioned by Teen Cancer America. *J Clin Oncol*. 2023 Jun 10;41(17):3260-3268. doi: 10.1200/JCO.22.01985. Epub 2023 Feb 24. PMID: 36827624
124. Piasecki TM, Smith SS, Baker TB, Slutske WS, Adsit RT, Bolt DM, Conner KL, Bernstein SL, Eng OD, Lazuk D, Gonzalez A, Jorenby DE, D'Angelo H, Kirsch JA, Williams BS, Nolan MB, Hayes-Birchler T, Kent S, Kim H, Lubanski S, Yu M, Suk Y, Cai Y, Kashyap N, Mathew JP, McMahan G, Rolland B, Tindle HA, Warren GW, An LC, Boyd AD, Brunzell DH, Carrillo V, Chen LS, Davis JM, Deshmukh VG, Dilip D, Ellerbeck EF, Goldstein AO, Iturrate E, Jose T, Khanna N, King A, Klass E, Mermelstein RJ, **Tong E**, Tsoh JY, Wilson KM, Theobald WE, Fiore MC. Smoking Status, Nicotine Medication, Vaccination, and COVID-19 Hospital Outcomes: Findings from the COVID EHR Cohort at the University of Wisconsin (CEC-UW) Study. *Nicotine Tob Res*. 2022 Sep 7:ntac201. doi: 10.1093/ntr/ntac201. Epub ahead of print. PMID: 36069915; PMCID: PMC9494410.
125. Pierce JG, Ricon R, Rukmangadhan S, Kim M, Rajasekar G, Nuño M, Curtis E, **Humphries M**. Adherence to the TQIP Palliative Care Guidelines Among Patients With Serious Illness at a Level I

- Trauma Center in the US. *JAMA Surg.* 2022 Dec 1;157(12):1125-1132. doi: 10.1001/jamasurg.2022.4718. PMID: 36260298; PMCID: PMC9582969.
126. Pohl JS, **Bell JF, Tancredi DJ**, Woods NF. Social isolation and health among family caregivers of older adults: Less community participation may indicate poor self-reported health. *Health Soc Care Community.* 2022 Nov;30(6):e6175-e6184. doi: 10.1111/hsc.14054. Epub 2022 Oct 7. PMID: 36205453.
  127. Potosky AL, Graves KD, Lin L, Pan W, Fall-Dickson JM, Ahn J, Ferguson KM, **Keegan THM**, Paddock LE, Wu XC, Cress R, Reeve BB. The prevalence and risk of symptom and function clusters in colorectal cancer survivors. *J Cancer Surviv.* 2022 Dec;16(6):1449-1460. doi: 10.1007/s11764-021-01123-6. Epub 2021 Nov 17. PMID: 34787775; PMCID: PMC9110561.
  128. Reiterman M, Atwill R, **Bang H**, Chin AI. Risks of in-hospital death and hospital length of stay of 7 days or longer among end-stage renal disease patients hospitalized with COVID-19: a retrospective cohort study in five California medical centers. *J Nephrol.* 2023 Apr;36(3):601-603. doi: 10.1007/s40620-023-01596-x. Epub 2023 Apr 4. PMID: 37014614
  129. **Rosenthal J, Tancredi D, Marcin J**, Ketchersid A, Horath E, Zerda E, Bushong T, Merriott D, **Romano P, Young H**, Hoffman K. Virtual Family-Centered Rounds in the Neonatal Intensive Care Unit: Protocol for a Cluster Randomized Controlled Trial. *Res Sq.* 2023 Apr 17:rs.3.rs-2644794. doi: 10.21203/rs.3.rs-2644794/v1. Preprint. PMID: 37131689
  130. **Rosenthal JL**, Albano AD, **Tancredi DJ**, Perez SL, **Young HM, Romano PS**. Development and Psychometric Evaluation of a Caregiver Survey to Assess Family-Centered Care in the Emergency Department. *Acad Pediatr.* 2022 Oct 23:S1876-2859(22)00555-1. doi: 10.1016/j.acap.2022.10.018. Epub ahead of print. PMID: 36283624.
  131. **Rosenthal JL, Haynes SC\***, **Bonilla B\*\***, Rominger K, Williams J, Sanders A, Orqueza Dizon RA, Grether-Jones KL, **Marcin JP**, Hamline MY. Enhancing the Implementation of the Virtual Pediatric Trauma Center Using Practical, Robust, Implementation and Sustainability Model: A Mixed-Methods Study. *Telemed Rep.* 2022 Jul 25;3(1):137-148. doi: 10.1089/tmr.2022.0020. PMID: 36185467; PMCID: PMC9518803.
  132. **Rosenthal JL, Hoyt-Austin AE\***, Ketchersid A, Sanders A, Harper TA, **Tancredi DJ, Young HM, Romano PS, Marcin JP**. Nurse-to-family telehealth for pediatric transfers: protocol for a feasibility and pilot cluster randomized controlled trial. *Pilot Feasibility Stud.* 2023 Apr 11;9(1):57. doi: 10.1186/s40814-023-01292-4. PMID: 37041600
  133. **Rosenthal JL, Tancredi DJ, Marcin JP**, Ketchersid A, Horath ET, Zerda EN, Bushong TR, Merriott DS, **Romano PS, Young HM**, Hoffman KR. Virtual family-centered hospital rounds in the neonatal intensive care unit: protocol for a cluster randomized controlled trial. *Trials.* 2023 May 16;24(1):331. doi: 10.1186/s13063-023-07340-x. PMID: 37194089
  134. Russell RT, Bembea MM, Borgman MA, Burd RS, Gaines BA, Jafri M, Josephson CD, Leeper CM, Leonard JC, Muszynski JA, Nicol KK, **Nishijima DK**, Stricker PA, Vogel AM, Wong TE, Spinella PC. Pediatric traumatic hemorrhagic shock consensus conference research priorities. *J Trauma Acute Care Surg.* 2023 Jan 1;94(1S Suppl 1):S11-S18. doi: 10.1097/TA.0000000000003802. Epub 2022 Oct 7. PMID: 36203242
  135. Russell RT, Esparaz JR, Beckwith MA, Abraham PJ, Bembea MM, Borgman MA, Burd RS, Gaines BA, Jafri M, Josephson CD, Leeper C, Leonard JC, Muszynski JA, Nicol KK, **Nishijima DK**, Stricker PA, Vogel AM, Wong TE, Spinella PC. Pediatric traumatic hemorrhagic shock consensus conference recommendations. *J Trauma Acute Care Surg.* 2023 Jan 1;94(1S Suppl 1):S2-S10. doi: 10.1097/TA.0000000000003805. Epub 2022 Oct 17. PMID: 36245074
  136. Schulson LB, Predmore Z, Sousa JL, McCullough CM, Magit A, Lerner C, Chinnock R, Barkley S, **Marcin JP**, McGuire T, Browne MA, Uscher-Pines L. Perceptions of Pediatric Endocrinologists and Neurologists on the Drivers of Telehealth Use. *Acad Pediatr.* 2022 Aug 5:S1876-2859(22)00371-0. doi: 10.1016/j.acap.2022.07.021. Epub ahead of print. PMID: 35940573.

137. Schulson LB, Predmore Z, Sousa JL, McCullough CM, Magit A, Lerner C, Chinnock R, Barkley S, **Marcin JP**, McGuire T, Browne MA, Uscher-Pines L. Perceptions of Pediatric Endocrinologists and Neurologists on the Drivers of Telehealth Use. *Acad Pediatr*. 2023 Mar;23(2):271-278. doi: 10.1016/j.acap.2022.07.021. Epub 2022 Aug 5. PMID: 35940573
138. **Schwarz EB, Chatterton B\*, Fix M\*\***, Tebb K, Rodriguez F, **Tancredi DJ**, Muriki M, Satterfield J. Remotely Educating Young Women About Alcohol: A Randomized Trial of the PartyWise Intervention. *J Womens Health (Larchmt)*. 2022 Aug;31(8):1179-1187. doi: 10.1089/jwh.2021.0285. Epub 2022 Feb 28. PMID: 35230177.
139. **Schwarz EB, Lewis CA\*\***, **Dove MS**, Murphy E, Zuckerman D, Nunez-Eddy C, **Tancredi DJ**, McDonald-Mosley R, Sonalkar S, Hathaway M, Gariepy AM. Comparative Effectiveness and Safety of Intrauterine Contraception and Tubal Ligation. *J Gen Intern Med*. 2022 Dec;37(16):4168-4175. doi: 10.1007/s11606-022-07433-4. Epub 2022 Feb 23. PMID: 35194746; PMCID: PMC8863411.
140. Selker HP, Cohen T, D'Agostino RB, Dere WH, Ghaemi SN, Honig PK, Kaitin KI, Kaplan HC, **Kravitz RL**, Larholt K, McElwee NE, Oye KA, Palm ME, Perfetto E, Ramanathan C, Schmid CH, Seyfert-Margolis V, Trusheim M, Eichler HG. A Useful and Sustainable Role for N-of-1 Trials in the Healthcare Ecosystem. *Clin Pharmacol Ther*. 2022 Aug;112(2):224-232. doi: 10.1002/cpt.2425. Epub 2021 Oct 20. PMID: 34551122; PMCID: PMC9022728.
141. Sharma S, Yellowlees PM, Gotthardt CJ, Luce MS, Avdalovic MV, **Marcin JP**. Environmental Impact of Ambulatory Telehealth Use by a Statewide University Health System During COVID-19. *Telemed J E Health*. 2022 Dec 23. doi: 10.1089/tmj.2022.0396. Epub ahead of print. PMID: 36576982.
142. Shimkhada R, Miller J, **Magnan E, Miller M\*\***, Coffman J, Corbett G. Policy Considerations for Routine Screening for Adverse Childhood Events (ACEs). *J Am Board Fam Med*. 2022 Jul-Aug;35(4):862-866. doi: 10.3122/jabfm.2022.04.210454. PMID: 35896468.
143. Singh A, Thorpe S, **Keegan T**, Maguire F, Malogolowkin M, **Abrahão R\***, Spunt S, Carr-Asher J, Alvarez E. Localized Synovial Sarcoma: A Population-Based Analysis of Treatment Patterns and Survival. *J Adolesc Young Adult Oncol*. 2023 Apr 27. doi: 10.1089/jayao.2022.0143. Online ahead of print. PMID: 37104039
144. Singh A, Thorpe S, **Keegan T**, Maguire F, Malogolowkin M, **Abrahão R\***, Spunt S, Carr-Asher J, Alvarez E. Localized Synovial Sarcoma: A Population-Based Analysis of Treatment Patterns and Survival. *J Adolesc Young Adult Oncol*. 2023 Apr 27. doi: 10.1089/jayao.2022.0143. Online ahead of print. PMID: 37104039
145. Singh S, Hearps S, **Nishijima DK\***, Cheek JA, Borland M, Dalziel S, **Holmes J, Kuppermann N**, Babi FE, **Hoch JS**; Paediatric Research in Emergency Departments International Collaborative (PREDICT). Cost-effectiveness of patient observation on cranial CT use with minor head trauma. *Arch Dis Child*. 2022 Aug;107(8):712-718. doi: 10.1136/archdischild-2021-323701. Epub 2022 Feb 22. PMID: 35193874.
146. Singh S, **Hoch JS**, Hearps S, Dalziel K, Cheek JA, **Holmes J**, Anderson V, **Kuppermann N**, Babi FE. Sports-related traumatic brain injuries and acute care costs in children. *BMJ Paediatr Open*. 2023 Jan;7(1):e001723. doi: 10.1136/bmjpo-2022-001723. PMID: 36720502
147. Slack DH, **Venugopal S**, Amsterdam EA. A Postoperative Octopus Trap: Reverse Stress Cardiomyopathy. *Am J Med*. 2022 Jul;135(7):853-855. doi: 10.1016/j.amjmed.2022.01.025. Epub 2022 Feb 5. PMID: 35131306.
148. Smucny J, Lesh TA, **Niendam TA**, Ragland JD, Tully LM, Carter CS. Evidence for functional improvement in reward anticipation in recent onset schizophrenia after one year of coordinated specialty care. *Psychol Med*. 2022 Nov 24:1-8. doi: 10.1017/S0033291722003592. Epub ahead of print. PMID: 36420704.

149. Snyder H, Chau B, Kalmin MM, Speener M, Campbell A, **Moulin A**, Herring AA. High-Dose Buprenorphine Initiation in the Emergency Department Among Patients Using Fentanyl and Other Opioids. JAMA Netw Open. 2023 Mar 1;6(3):e231572. doi: 10.1001/jamanetworkopen.2023.1572. PMID: 36867410
150. Stotz SA, Budd Nugent N, **Ridberg R\***, Byker Shanks C, Her K, Yaroch AL, Seligman H. Produce prescription projects: Challenges, solutions, and emerging best practices - Perspectives from health care providers. Prev Med Rep. 2022 Aug 13;29:101951. doi: 10.1016/j.pmedr.2022.101951. PMID: 36161127; PMCID: PMC9502043.
151. Sumner MW, Florin TA, **Kuppermann N**, Xie J, **Tancredi DJ**, Freedman SB; of the Pediatric Emergency Research Network PERN, Pediatric Emergency Research Canada PERC – COVID-19 Study Teams. Liver transaminase concentrations in children with acute SARS-CoV-2 infection. Clin Biochem. 2023 May 30;118:110588. doi: 10.1016/j.clinbiochem.2023.110588. Online ahead of print. PMID: 37263559
152. **Tong EK**, Cummins SE, Anderson CM, Kirby CA, Wong S, Zhu SH. Quitline Promotion to Medicaid Members Who Smoke: Effects of COVID-19-Specific Messaging and a Free Patch Offer. Am J Prev Med. 2022 Oct 29:S0749-3797(22)00466-4. doi: 10.1016/j.amepre.2022.09.009. Epub ahead of print. PMID: 36319510; PMCID: PMC9617663.
153. **Tong EK**, Cummins SE, Anderson CM, Kirby CA, Wong S, Zhu SH. Quitline Promotion to Medicaid Members Who Smoke: Effects of COVID-19-Specific Messaging and a Free Patch Offer. Am J Prev Med. 2023 Mar;64(3):343-351. doi: 10.1016/j.amepre.2022.09.009. Epub 2022 Oct 29. PMID: 36319510
154. **Tong EK**, Zhu SH, Anderson CM, Avdalovic MV, Amin AN, Diamant AL, Fong TW, Clay B, El-Kareh R, Sankaran S, Bonniot C, Kirby CA, Mayoral A, Sarna L. Implementation, Maintenance, and Outcomes of an Electronic Referral to a Tobacco Quitline Across Five Health Systems. Nicotine Tob Res. 2023 Mar 29:ntad008. doi: 10.1093/ntr/ntad008. Online ahead of print. PMID: 36977494
155. Trainor JL, Glaser NS, Tzimenatos L, Stoner MJ, Brown KM, McManemy JK, Schunk JE, Quayle KS, Nigrovic LE, Rewers A, Myers SR, Bennett JE, Kwok MY, Olsen CS, Casper TC, Ghetti S, **Kuppermann N**; Pediatric Emergency Care Applied Research Network (PECARN) FLUID Study Group. Clinical and Laboratory Predictors of Dehydration Severity in Children With Diabetic Ketoacidosis. Ann Emerg Med. 2023 Apr 4:S0196-0644(23)00002-1. doi: 10.1016/j.annemergmed.2023.01.001. Online ahead of print. PMID: 37024382
156. **Trenaman L\***, Harrison M, **Hoch JS**. Medicare Beneficiaries' Perspectives on the Quality of Hospital Care and Their Implications for Value-Based Payment. JAMA Netw Open. 2023 Jun 1;6(6):e2319047. doi: 10.1001/jamanetworkopen.2023.19047. PMID: 37342041
157. **Tsergounis IE\***, Delcher C, Stewart SL, Gasper JJ, Shev AB, Crawford A, Wintemute G, **Henry SG**. The impact of California wildfires on patient access to prescription opioids. J Am Pharm Assoc (2003). 2022 Nov-Dec;62(6):1769-1777. doi: 10.1016/j.japh.2022.05.012. Epub 2022 May 13. PMID: 35660074; PMCID: PMC9637732.
158. **Valencia CV\*\*, **Dove MS\***, Cummins SE, Kirby C, Zhu SH, Giboney P, Yee HF, **Tu SP**, **Tong EK**. A Proactive Outreach Strategy Using a Local Area Code to Refer Unassisted Smokers in a Safety Net Health System to a Quitline: A Pragmatic Randomized Trial. Nicotine Tob Res. 2023 Jan 1;25(1):43-49. doi: 10.1093/ntr/ntac156. PMID: 36103393**
159. Vanrell MC, Martinez SJ, Muñoz LI, Salassa BN, Gambarte Tudela J, **Romano PS**. Induction of Autophagy by Ursolic Acid Promotes the Elimination of Trypanosoma cruzi Amastigotes From Macrophages and Cardiac Cells. Front Cell Infect Microbiol. 2022 Jul 8;12:919096. doi: 10.3389/fcimb.2022.919096. PMID: 36004334; PMCID: PMC9394444.
160. Walsh P, Chaigneau FRC, Lebedev M, Mutua V, McEligot H, Lam SHF, Hwang B, **Bang H**, Gershwin LJ. Validating a bovine model for lung ultrasound of bronchiolitis. J Ultrasound. 2022

Sep;25(3):611-624. doi: 10.1007/s40477-021-00635-2. Epub 2022 Jan 24. PMID: 35067896; PMCID: PMC8784226.

161. Walsh P, Chaigneau FRC, Lebedev M, Mutua V, McEligot H, Lam SHF, Hwang B, **Bang H**, Gershwin LJ. Lung ultrasound allows for earlier diagnosis of bronchiolitis than auscultation: an animal experiment and human case series. J Ultrasound. 2022 Dec;25(4):877-886. doi: 10.1007/s40477-021-00648-x. Epub 2022 Feb 18. PMID: 35179715; PMCID: PMC9705680.
162. Ward MM, Carter KD, Bhagianadh D, Ullrich F, Merchant KAS, **Marcin JP**, Law KB, McCord C, Neufeld J, Nelson EL, Shane DM. Comparison of Telehealth and In-Person Behavioral Health Services and Payment in a Large Rural Multisite Usual Care Study. Telemed J E Health. 2023 Apr 10. doi: 10.1089/tmj.2022.0445. Online ahead of print. PMID: 37036816
163. Warren S, Amsterdam EA, **Venugopal S**. It Was the Aorta but Not a Dissection: Intramural Aorta Hematoma. Am J Med. 2022 Dec;135(12):1450-1452. doi: 10.1016/j.amjmed.2022.07.016. Epub 2022 Aug 19. PMID: 35988746.
164. Whitney RL, **Bell JF**, Kilaberia TR, Link BM, Choula RB, Reinhard SC, **Young HM**. Diverse demands and resources among racially/ethnically diverse caregivers. Ethn Health. 2023 Mar 1:1-20. doi: 10.1080/13557858.2023.2179022. Online ahead of print. PMID: 36858966
165. Williams AB, Liu X, Hsieh F, Hurtado M, Lesh T, **Niendam T**, Carter C, Ranganath C, Ragland JD. Memory-Based Prediction Deficits and Dorsolateral Prefrontal Dysfunction in Schizophrenia. Biol Psychiatry Cogn Neurosci Neuroimaging. 2023 Jan;8(1):71-78. doi: 10.1016/j.bpsc.2022.05.006. Epub 2022 May 23. PMID: 35618258
166. Won J, Lee JH, **Bang H**, Lee H. Safety of acupuncture by Korean Medicine Doctors: a prospective, practice-based survey of 37,490 consultations. BMC Complement Med Ther. 2022 Nov 18;22(1):300. doi: 10.1186/s12906-022-03782-z. PMID: 36401264; PMCID: PMC9675262.
167. Wongtanasarasin W, Srisurapanont K, **Nishijima DK**. How Epinephrine Administration Interval Impacts the Outcomes of Resuscitation during Adult Cardiac Arrest: A Systematic Review and Meta-Analysis. J Clin Med. 2023 Jan 6;12(2):481. doi: 10.3390/jcm12020481. PMID: 36675411
168. Yee MH, **Kravitz RL**. Racial and Ethnic Representativeness of California Medical Schools, 2021. JAMA Netw Open. 2023 Jan 3;6(1):e2251192. doi: h10.1001/jamanetworkopen.2022.51192. PMID: 36637823
169. **Young HM, Bell JF**, Tonkikh O, Kilaberia TR, Whitney RL, Mongoven JM, Link BM, Kelly K. Implementation of a Statewide Web-Based Caregiver Resource Information System (CareNav): Mixed Methods Study. JMIR Form Res. 2022 Jul 13;6(7):e38735. doi: 10.2196/38735. PMID: 35830234; PMCID: PMC9330201.
170. **Young HM**, Kilaberia TR, Whitney R, Link BM, **Bell JF**, Tonkikh O, Famula J, Oskarsson B. Needs of persons living with ALS at home and their family caregivers: A scoping review. Muscle Nerve. 2023 May 29. doi: 10.1002/mus.27849. Online ahead of print. PMID: 37248728
171. Yu N, **Hoch JS**, Martin AR, Shahlaie K. Trends in successfully matched neurosurgery residency applicants. J Neurosurg. 2023 Apr 21:1-7. doi: 10.3171/2023.3.JNS222397. Online ahead of print. PMID: 37086164



---

## Appendix 3: Outreach Activities

### Major events and conferences

Listed below are select presentations that were provided by core faculty.

1. Robinson C, Fenton JJ, Cipri C, Gosdin M, Weinberg G. Inter-rater reliability of coding of clinician communication within a randomized trial to reduce low-value spinal imaging; NAPCRG 50th Annual Meeting, November 2022.
2. Melnikow J, Loureiro S. Frontline Physician Strategies to Address Vaccine Hesitancy During the COVID-19 Pandemic; CHPR Seminar Series, October 2022.
3. Cooke DT. Race and Medical Decision Tools: What, Why and Really?; CHPR Seminar Series, September 2022.
4. Romano P, Xing G, Weyrich M, Ray M, Tancredi D. Hospital Patient Safety Indicators in the Elderly Population in the COVID Era: Testing Trends over Time and Spillover Effects on Non-COVID Patients. Presented (oral) at the American Public Health Association 2022 Annual Meeting, November 2022; Boston, MA.
5. Fang SY, Ray M, Fenton JJ, Kennedy J, Padilla K, Romano PS, and the OptumLabs Expert Advisory Group. First-Seen Provider and Utilization Patterns Among Patients with New-onset Neck Pain. Presented (oral) at the American Public Health Association 2022 Annual Meeting, November 2022; Boston, MA.
6. Romano PS, Ray M, Fang SY, Elton D, Haldeman S, Wayne P, Fenton JJ, Padilla K, Kennedy J, Lisi A. First-Seen Provider and Pharmacotherapy Patterns Among Patients with New-onset Neck Pain. Presented (oral) at Integrative Medicine and Health Symposium, March 1, 2023; Chicago, IL.
7. Romano PS, Ray M, Fang SY, Elton D, Haldeman S, Wayne P, Fenton JJ, Padilla K, Kennedy J, Lisi A. First-Seen Provider and Utilization Patterns Among Patients with New-onset Neck Pain. Presented (poster) at Integrative Medicine and Health Symposium, February 28 – March 1, 2023; Chicago, IL.
8. Romano PS, Ray M, Wang S, Bohl A. Hospital Patient Safety Indicators in the COVID Era: Evidence for Improving Care Over Time. Presented (poster) at the 2023 Annual Research Meeting of AcademyHealth, June 2023; Seattle, WA.
9. Calkins K, Pfeiffer A, Penoyer S, Xu H, Ray M, Romano P, Bohl A. The Association between Severe Maternal Morbidity during Delivery and Cesarean Birth Rates, Length of Stay, and in-Hospital Mortality Using National Hospital Billing Data from 2018-2021. Presented (poster) at the 2023 Annual Research Meeting of AcademyHealth, June 2023; Seattle, WA.

### Notable publications

1. Florin TA, Melnikow J, Gosdin M, Ciuffetelli R, Benedetti J, Ballard D, Gausche-Hill M, Kronman MP, Martin LA, Mistry RD, Neuman MI, Palazzi DL, Patel SJ, Self WH, Shah SS, Shah SN, Sirota S, Cruz AT, Ruddy R, Gerber JS, Kuppermann N. Developing Consensus on Clinical Outcomes for Children with Mild Pneumonia: A Delphi Study. *J Pediatric Infect Dis Soc.* 2023 Feb 27;12(2):83-88. doi:10.1093/jpids/piac123. PMID: 36625856
2. Henry SG, Fenton JJ, Campbell CI, Sullivan M, Weinberg G, Naz H, Graham WM, Dossett ML, Kravitz RL. Development and Testing of a Communication Intervention to Improve Chronic Pain Management in Primary Care: A Pilot Randomized Clinical Trial. *Clin J Pain.* 2022 Oct 1;38(10):620-631. doi: 10.1097/AJP.0000000000001064. PMID: 36037051; PMCID: PMC9481730.

3. Gold EB, Xing G, Avis NE, Harlow S, Joffe H, Matthews K, Pavlovic JM, Thurston RC, Waetjen E. The longitudinal relation of inflammation to incidence of vasomotor symptoms. *Menopause*. 2022 Aug 1;29(8):894-904. doi: 10.1097/GME.0000000000002005. PMID: 35905469; PMCID: PMC9346702.
4. Jerant A, Duberstein PR, Kravitz RL, Kleiman EM, Rizvi SL, Cipri C, Liu D, Scher L, Freitas M, Jones-Hill M, Oravetz A, Van Orden KA, Franks P. Ethical and methodological challenges slowing progress in primary care-based suicide prevention: Illustrations from a randomized controlled trial and guidance for future research. *J Psychiatr Res*. 2022 Oct;154:242-251. doi: 10.1016/j.jpsychires.2022.07.038. Epub 2022 Aug 6. PMID: 35961180.
5. Magnan EM, Tancredi DJ, Xing G, Agnoli A, Jerant A, Fenton JJ. Association Between Opioid Tapering and Subsequent Health Care Use, Medication Adherence, and Chronic Condition Control. *JAMA Netw Open*. 2023 Feb 1;6(2):e2255101. doi: 10.1001/jamanetworkopen.2022.55101. PMID: 36749586
6. Rosenthal JL, Haynes SC, Bonilla B, Rominger K, Williams J, Sanders A, Orqueza Dizon RA, Grether-Jones KL, Marcin JP, Hamline MY. Enhancing the Implementation of the Virtual Pediatric Trauma Center Using Practical, Robust, Implementation and Sustainability Model: A Mixed-Methods Study. *Telemed Rep*. 2022 Jul 25;3(1):137-148. doi: 10.1089/tmr.2022.0020. PMID: 36185467; PMCID: PMC9518803.
7. Schwarz EB, Chatterton B, Fix M, Tebb K, Rodriguez F, Tancredi DJ, Muriki M, Satterfield J. Remotely Educating Young Women About Alcohol: A Randomized Trial of the PartyWise Intervention. *J Womens Health (Larchmt)*. 2022 Aug;31(8):1179-1187. doi: 10.1089/jwh.2021.0285. Epub 2022 Feb 28. PMID: 35230177.
8. Schwarz EB, Lewis CA, Dove MS, Murphy E, Zuckerman D, Nunez-Eddy C, Tancredi DJ, McDonald-Mosley R, Sonalkar S, Hathaway M, Gariepy AM. Comparative Effectiveness and Safety of Intrauterine Contraception and Tubal Ligation. *J Gen Intern Med*. 2022 Dec;37(16):4168-4175. doi: 10.1007/s11606-022-07433-4. Epub 2022 Feb 23. PMID: 35194746; PMCID: PMC8863411.
9. Shimkhada R, Miller J, Magnan E, Miller M, Coffman J, Corbett G. Policy Considerations for Routine Screening for Adverse Childhood Events (ACEs). *J Am Board Fam Med*. 2022 Jul-Aug;35(4):862-866. doi: 10.3122/jabfm.2022.04.210454. PMID: 35896468.
10. Valencia CV, Dove MS, Cummins SE, Kirby C, Zhu SH, Giboney P, Yee HF, Tu SP, Tong EK. A Proactive Outreach Strategy Using a Local Area Code to Refer Unassisted Smokers in a Safety Net Health System to a Quitline: A Pragmatic Randomized Trial. *Nicotine Tob Res*. 2023 Jan 1;25(1):43-49. doi: 10.1093/ntr/ntac156. PMID: 36103393

## K-12 engagement

Dr. Na'amah Razon, a CHPR affiliate, has a career development award through the CTSC, for which CHPR researcher Bethney Bonilla provides valuable project management support.

## Appendix 4: Education

Appendix 4 Table 1. Current Postdoctoral Fellows Affiliated with CHPR

Fellow Name (Start Year)	Training Program	Department/Affiliation	Mentor(s)	Project(s)
Zhang, Yi, Ph.D. (2021-2023)	Post-doctoral Fellow	CHPR	Dr. Jeffrey Hoch	Multiple health services research projects with multiple investigators across disciplines

Appendix 4 Table 2. CHPR Seminars during FY 2022–2023

Presenter	Title/Organization	Presentation	Date
Dr. David Tom Cooke	Professor and Chief, Division of General Thoracic Surgery, UC Davis Health	Race and medical decision tools: What, why and really?	September 21, 2022
Dr. Dean A. Regier	Associate Professor and Senior Scientist, School of Population and Public Health, Cancer Control Research, BC Cancer, University of British Columbia	Life-cycle assessment: Real-world evidence for precision oncology	October 5, 2022
Dr. Joy Melnikow	Emeritus Professor, Family and Community Medicine, UC Davis Health	Frontline physician strategies to address vaccine hesitancy during the covid-19 pandemic	October 12, 2022
Sabrina Loureiro	Project Policy Analyst, Center for Healthcare Policy and Research, UC Davis		
Dr. Jennifer Rosenthal	Associate Professor, Department of Pediatrics, UC Davis Health	Application of implementation frameworks to conduct mixed-methods evaluations	October 19, 2022
Dr. Monica McLemore	Professor and Interim Director, Center for Anti-Racism in Nursing, University of Washington School of Nursing	The state of reproductive rights: What's changed, what's next, and what we can do now	October 26, 2022
Dr. Michelle-Linh Nguyen	Fellow, National Clinician Scholars Program, UC San Francisco	Primary care time scarcity, the changing practice of medicine and physician burnout: A qualitative study	November 2, 2022

Kathryn Hall-Trujillo	Founding Director, Birthing Project USA	How black mamas and birthing people are working to challenge and change health care systems	November 9, 2022
Dr. Veronica Pear	Professor, Emergency Medicine, UC Davis Health	Emerging research on California's "red flag" law	November 16, 2022
Dr. Sara Allin	Associate Professor, Institute of Health Policy, Management and Evaluation, Dalla Lana School of Public Health, University of Toronto	How do we evaluate impacts of primary care reform? insights from a multiple methods study in two Canadian provinces	November 30, 2022
Dr. Elizabeth Oliva	Investigator, Center for Innovation to Implementation, U.S. Department of Veterans Affairs	The fourth wave of the opioid overdose crisis: Lessons for researchers from the Veterans Health Administration	December 7, 2022
Dr. Peter Hilsenrath	Professor Emeritus, University of the Pacific	American healthcare: why it costs so much yet remains a beacon of growth and development	January 18, 2023
Marina Richardson	Ph.D. candidate, Health Services Research, Institute of Health Policy, Management and Evaluation, University of Toronto	Exploring systems thinking in Health Technology Assessment: My observations as an HTA employee and researcher	February 1, 2023
Dr. Lynne Moore	Professor, Department of Social and Preventive Medicine, Université Laval	Economic evaluation of an audit and feedback intervention	February 8, 2023
Dr. Jason Robert Guertin	Associate Professor, Department of Social and Preventive Medicine, Faculty of Medicine, Université Laval		
Blancahrd Conombo	Ph.D. candidate, Epidemiology, Department of Economics, Université Laval		

Dr. Hannah Laqueur	Assistant Professor, Department of Emergency Medicine, UC Davis Health	Uses of machine learning risk prediction to inform and evaluate policies and practices	February 15, 2023
Dr. George Goshua	Assistant Professor, Hematology, Yale University School of Medicine	Informing guidelines and impacting practice: Quantitative decision science in clinical hematology-oncology	February 22, 2023
Dr. Jennifer Karlin	Assistant Professor, Department of Family and Community Medicine, UC Davis Health	Barriers and facilitators to expansion of at home use of injectable contraceptives	March 1, 2023
Caryn Rubanovich	Ph.D. student, Clinical Psychology, University of California, San Diego	Honoring privacy: Identifying and responding to healthcare providers' mental health needs	March 8, 2023
Dr. Yvonne Bombard	Associate Professor, Institute of Health Policy, Management and Evaluation, University of Toronto	Delivering genomics digitally: Evidence, policy and equity	March 15, 2023
Dr. Sarah Javier	Research Health Science Specialist, U.S. Department of Veterans Affairs	Putting the "care" back in healthcare: Implementation science approaches to improve health equity (download slides)	March 22, 2023
Dr. Jennifer Falbe	Associate Professor, Nutrition and Human Development, UC Davis	Food policy: Warning labels for food and beverages high in added sugar	April 5, 2023
Dr. Sara Allin	Associate Professor, Institute of Health Policy, Management and Evaluation, Dalla Lana School of Public Health, University of Toronto	Comparing health systems across North America: Learning from reforms to expand coverage, improve quality and recover from COVID-19 (download slides)	April 12, 2023
Dr. Thomas Rice	Distinguished Professor and Vice of Chair of		

Dr. Miguel Gonzalez-Block	Health Policy and Management, Fielding School of Public Health, UCLA  Associate Researcher, Anahuac University		
Dr. Matt Rodriguez	4-H Youth Development Advisor, University of California Cooperative Extension	Community-based youth development programming: Assessing factors that shape program engagement	April 19, 2023
Emily Aiken	Ph.D. student, School of Information, UC Berkeley	Algorithmic allocation of humanitarian aid with machine learning and digital data	April 26, 2023
Dr. Bennett Allen	Assistant Professor, Epidemiology, Department of Population Health, NYU Grossman School of Medicine	Responding to the overdose epidemic in Rhode Island: Prediction, prevention and policy	May 3, 2023
Dr. Hong Li	Associate Professor, Public Health Sciences, UC Davis	Multiclass classification for disease with ordinal categories: Application to dementia	May 10, 2023
Dr. Arrianna Marie Planey	Assistant Professor, Department of Health Policy and Management, University of North Carolina Gillings School of Global Public Health	Conceptualizing time as a SDoH in cancer (outcomes) research: 2 case studies at the intersection of rurality x access to care	May 17, 2023
Tarun Ramesh	M.D. candidate, Harvard Medical School	A double dose of inequality: Rural hospital closures and access to care for communities of color	May 31, 2023
Dr. David Chin	Assistant Professor, Health Policy and Management, University of Massachusetts Amherst	Do non-English speaking patients receive less timely ICU care? Examining the association between patients' primary language and length of stay in intensive care using the MIMIC data set	June 7, 2023

---

## Appendix 5: Additional Information

### Steering or advisory committee(s)

See Appendix 8 for a full list of CHPR's internal and external advisory boards.

### Collaborators and visitors

CHPR hosted international and U.S.-based speakers from universities, institutions and government agencies for its well-regarded Seminar Series. See Appendix 4, Table 2 for the full list of guest speakers, their affiliates and presentation topics.

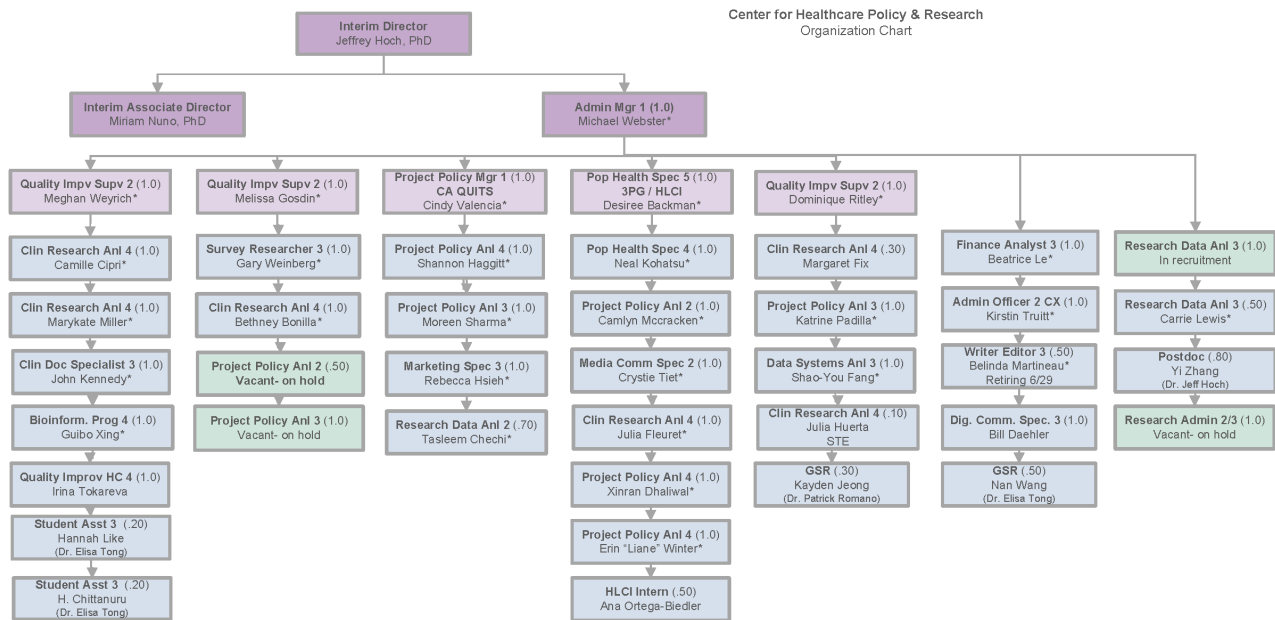
### Program members

See Appendix 7 for a full list of CHPR's affiliate membership.

### Awards and recognitions

Multiple CHPR staff received STAR awards for going above and beyond.

# Appendix 6: Organizational Chart



\*career employee

The above organization chart is as of June 30, 2023.



## Appendix 7: Program Members

As of June 30, 2023, CHPR had 121 (primarily faculty) affiliates. Affiliates include faculty from the School of Medicine, the School of Nursing, and other UC Davis schools and departments, including Communication, Psychology, Sociology, Human Ecology, Statistics, Biological and Agricultural Engineering, and the Graduate School of Management. The current mix of Center membership is 76% from the UC Davis School of Medicine, 15% from the UC Davis Betty Irene Moore School of Nursing, 9% from other UC Davis campus schools and colleges or external organizations.

Appendix 7 Table 1. Current CHPR Affiliates

Member Name	Title	Department
Agnoli, Alicia, M.D., M.P.H., M.H.S.	Associate Professor	Family and Community Medicine
Aguilar-Gaxiola, Sergio, M.D., Ph.D.	Professor	Internal Medicine
Alcalay, Rina E., Ph.D.	Professor Emeritus	Communication
Bakerjian, Debra, Ph.D., R.N., F.N.P.	Professor	Betty Irene Moore School of Nursing
Bang, Heejung, Ph.D.	Professor	Public Health Sciences
Bell, Janice, Ph.D., M.P.H., M.N.	Professor	Betty Irene Moore School of Nursing
Bell, Robert A., Ph.D.	Professor Emeritus	Communication
Bold, Richard J., M.D.	Professor	Surgery
Bommer, William, M.D.	Professor	Internal Medicine
Brown, Lisa, M.D., M.A.S.	Associate Professor	Surgery
Brown, Susan Denise, Ph.D.	Associate Professor	Internal Medicine
Buggs, Shani, Ph.D., M.D.	Assistant Professor	Emergency Medicine
Chen, Shuai, Ph.D.	Associate Professor	Public Health Sciences
Cooke, David Tom, M.D.	Professor	Surgery
Cothran, Fawn, Ph.D., R.N., G.C.N.S.-B.C., F.G.S.A.	Assistant Professor	Family Caregiving Institute
Crossen, Stephanie, M.D., M.P.H.	Associate Professor	Pediatrics
de Leon Siantz, Mary Lou, Ph.D., R.N., F.A.A.N.	Professor Emeritus	Betty Irene Moore School of Nursing
Deeb-Sossa, Natalia, Ph.D.	Associate Professor	Sociology
Derlet, Robert W., M.D.	Professor Emeritus	Emergency Medicine

Drake, Christiana M., Ph.D.	Professor	Statistics
Ducore, Jonathan M., M.D., M.P.H.	Professor	Pediatrics
Emami-Naeini, Parisa, M.D., M.P.H.	Assistant Professor	Ophthalmology
Fable, Jennifer, Sc.D., M.P.H.	Associate Professor	Human Ecology
Fancher, Tonya, M.D., M.P.H.	Professor	Internal Medicine
Farmer, Diana, L., M.D.	Professor	Surgery
Fedyk, Mark, Ph.D.	Associate Professor	Betty Irene Moore School of Nursing
Feng, Bo, Ph.D.	Professor	Communication
Fenton, Joshua, M.D., M.P.H.	Professor	Family and Community Medicine
Fernandez y Garcia, Erik, M.D., M.P.H.	Associate Professor	Pediatrics
Fernando, Leonor Pabon , M.D.	Associate Physician Diplomate	Pathology and Laboratory Medicine
Fishman, Scott, M.D.	Professor	Anesthesiology and Pain Medicine
Franks, Peter, M.D.	Professor	Family and Community Medicine
Garcia, Jorge A., M.D., M.S.	Associate Professor	Internal Medicine
Garcia, Lorena, M.P.H., Ph.D., F.A.C.P.	Professor	Public Health Sciences
Halfmann, Drew, Ph.D.	Associate Professor	Sociology
Hansen, Robin L., M.D.	Professor Emeritus	Pediatrics
Hedayati, Nasim, M.D., M.S.	Professor	Surgery
Henry, Stephen G., M.D., M.Sc.	Associate Professor	Internal Medicine
Hinton, Ladson, M.D.	Professor	Psychiatry and Behavioral Sciences
Hirsch, Calvin H., M.D.	Professor Emeritus	Internal Medicine
Hoch, Jeffrey, Ph.D.	Professor	Public Health Sciences
Holmes, James, M.D., M.P.H.	Professor	Emergency Medicine
Humphries, Misty, M.D., M.A.S., R.P.V.I., F.A.C.S.	Associate Professor	Surgery
Huo, Meng, Ph.D.	Assistant Professor	Human Ecology
Jerant, Anthony F., M.D.	Professor	Family and Community Medicine

Johnson, David, M.A., Ph.D.	Professor	Neurology
Joseph, Jill, M.D., Ph.D., M.P.H.	Professor Emeritus	Betty Irene Moore School of Nursing
Kair, Laura, M.D., M.A.S.	Associate Professor	Pediatrics
Karlin, Jennifer, M.D., Ph.D.	Associate Professor	Family and Community Medicine
Kaur, Jagdeep, M.D.	Associate Professor	Psychiatry and Behavioral Sciences
Keegan, Theresa, Ph.D., M.S.	Associate Professor	Internal Medicine
Kim, Katherine, M.P.H.	Associate Professor	Betty Irene Moore School of Nursing
Kim, Sunny, Ph.D.	Professor Emeritus	Public Health Sciences
Knapp, Penelope, K. M.D.	Associate Professor	Psychiatry and Behavioral Sciences, Pediatrics
Ko, Michelle, Ph.D., M.P.H.	Associate Professor	Public Health Sciences
Koga, Patrick M., M.D., M.P.H.	Associate Professor	Public Health Sciences
Kravitz, Richard L., M.D., M.S.P.H.	Distinguished Professor	Internal Medicine
Kupperman, Nathan, M.D., M.P.H.	Distinguished Professor	Emergency Medicine, Pediatrics
Leigh, J. Paul, Ph.D.	Professor Emeritus	Public Health Sciences
Li, Su-Ting, M.D.	Associate Professor	Pediatrics
Lo, Ming-Cheng, Ph.D.	Professor	Sociology
Lyles, Courtney, Ph.D.	Professor	Public Health Sciences
Magnan, Elizabeth, M.D., Ph.D.	Associate Professor	Family and Community Medicine
Marcin, James P., M.D., M.P.H.	Professor	Pediatrics
Margolis, Helene, Ph.D., M.A.	Associate Professor	Internal Medicine
May, Larissa, M.D., M.S.P.H., M.S.H.S.	Professor	Emergency Medicine
McDonald, Craig M., M.D.	Professor	Physical Medicine and Rehabilitation, Pediatrics
Medel-Herrero, Alvaro, Ph.D., M.B.A.	Assistant Project Scientist	Center for Health and the Environment
Melnikow, Joy, M.D., M.P.H.	Professor Emeritus	Family and Community Medicine
Meyers, Frederick J., M.D.	Professor Emeritus	Internal Medicine and Pathology
Midboe, Amanda, Ph.D.	Associate Professor	Public Health Sciences

Miglioretti, Diana, Ph.D.	Professor	Public Health Sciences
Miller, Lisa M. Soederberg, Ph.D.	Associate Professor	Human Ecology
Miller, Miquell, M.D., M.Sc	Professor	Surgery
Moulin, Aimee, M.D.	Associate Professor	Emergency Medicine, Psychiatry and Behavioral Sciences
Mueller, Hans-Georg, M.D., Ph.D.	Distinguished Professor	Statistics
Murray-Garcia, Jann, M.D., M.P.H.	Professor	Betty Irene Moore School of Nursing
Nesbitt, Thomas S., M.D., M.P.H.	Professor	Family and Community Medicine
Nguyen, Hien, M.D., M.A.S.	Professor	Internal Medicine
Niendam, Tara, Ph.D.	Professor	Psychiatry and Behavioral Sciences
Nishijima, Daniel, M.D.	Professor	Emergency Medicine
Nuño, Miriam, Ph.D.	Professor	Public Health Sciences
Oni-Orisan, Adeola, M.D., Ph.D.	Assistant Professor	Family and Community Medicine
Palmer, Donald A., Ph.D.	Professor	Graduate School of Management
Park, Jeanny K., M.D.	Professor Emeritus	Pediatrics
Ray, Monika, Ph.D., M.S.	Computational Data and Research Scientist	Internal Medicine
Razon, Na'amah, M.D., Ph.D.	Assistant Professor	Family and Community Medicine
Robbins, John, M.D., M.H.S.	Professor Emeritus	Internal Medicine
Rocke, David M., Ph.D.	Distinguished Professor	Biomedical Engineering, Public Health Sciences
Romano, Patrick S., M.D., M.P.H.	Professor	Internal Medicine, Pediatrics
Romanowski, Kathleen, M.D., M.A.S., F.A.C.S., F.C.C.M.	Associate Professor	Surgery
Rosenthal, Jennifer, M.D.	Associate Professor	Pediatrics
Roussas, George G., Ph.D.	Distinguished Professor Emeritus	Statistics
Savill, Mark, Ph.D.	Assistant Professor	Psychiatry and Behavioral Sciences
Schenker, Marc B., M.D., M.P.H.	Professor Emeritus	Public Health Sciences
Schweitzer, Julie, M.D.	Professor	Psychiatry and Behavioral Sciences
Shaikh, Ulfat, M.D., M.P.H.	Professor	Pediatrics

Sherman, Jeffrey, Ph.D.	Professor	Psychology
Shin, Ji Won, Ph.D., R.N.	Postdoctoral Scholar	Betty Irene Moore School of Nursing
Siefkes, Heather, M.D., M.S.C.I.	Associate Professor	Pediatrics
Siegel, Elena O., Ph.D., R.M	Associate Professor Emeritus	Betty Irene Moore School of Nursing
Singh, Naileshni, M.D.	Associate Professor	Anesthesiology and Pain Medicine
Solomon, Marjorie, Ph.D., M.B.A.	Professor	Psychiatry and Behavioral Sciences
Soltani, Tandis, M.D.	Acute Care Surgery Fellow	Surgery
Stahmer, Aubyn, Ph.D.	Professor	Psychiatry and Behavioral Sciences
Stocking, Jacqueline, Ph.D., M.B.A., M.S.N., R.N., N.E.A.-B.C.	Assistant Professor	Internal Medicine
Styne, Dennis M., M.D.	Professor	Pediatrics
Tancredi, Daniel J., Ph.D.	Professor	Pediatrics
Taylor, Laramie, Ph.D.	Professor	Communication
Tong, Elisa, M.D., M.A.	Professor	Internal Medicine
Tseregounis, Iraklis Erik, Ph.D.	Assistant Project Scientist	Internal Medicine
Tu, Shin Ping, M.D., M.P.H., F.A.C.P.	Professor	Internal Medicine
Urquiza, Anthony J., Ph.D.	Professor	Pediatrics
Utter, Garth H., M.D.	Professor	Surgery
Van de Water, Judith, Ph.D.	Professor	Internal Medicine
Waetjen, L. Elaine, M.D.	Professor	Obstetrics and Gynecology
Wang, Jane-Ling, Ph.D.	Distinguished Professor	Statistics
White, Richard H., M.D.	Professor Emeritus	Internal Medicine
Wiedeman, Jean, M.D., Ph.D.	Associate Professor Emeritus	Pediatrics

## Appendix 8: CHPR Advisory Boards

Appendix 8 Table 1. CHPR Internal Advisory Board Members

Board Member	Title
<b>Applegate II, Richard, M.D.</b>	Professor and Chair UC Davis Health Department of Anesthesiology and Pain Medicine
<b>Bales, Karen, Ph.D.</b>	Professor UC Davis Department of Psychology
<b>Farmer, Diana, M.D.</b>	Chair and Pearl Stamp Stewart Professor UC Davis Health Department of Surgery
<b>Ikemoto, Lisa, J.D., LL.M.</b>	Martin Luther King Jr. Professor of Law UC Davis School of Law Bioethics Associate UC Davis Health Bioethics Program
<b>Marcin, James, M.D., M.P.H.</b>	Director UC Davis Center for Health and Technology Vice Chair for Pediatric Clinical Research and Professor UC Davis Health Department of Pediatrics
<b>Tu, Shin-Ping, M.D., M.P.H.</b>	Chief UC Davis Health Division of General Medicine, Geriatrics, and Bioethics
<b>Wun, Theodore, M.D., F.A.C.P.</b>	Interim Vice Dean for Research UC Davis School of Medicine Associated Dean for Research Director UC Davis Clinical and Transitional Science Center Chief Division of Hematology and Oncology

Appendix 8 Table 2. CHPR External Advisory Board Members

Board Member	Title
<b>Carey, Timothy, M.D., M.P.H.</b>	Professor Department of Medicine and Social Medicine University of North Carolina
<b>Dangberg, Lori</b>	Vice President Alliance of Catholic Health Care
<b>Kiefe, Catrina, Ph.D., M.D.</b>	Professor Population and Quantitative Health Sciences University of Massachusetts Medical School
<b>Morris, Arden, M.D., M.P.H., F.A.C.S.</b>	Professor of Surgery Stanford University Medical Center
<b>Sales, Anne, Ph.D., R.N.</b>	Professor Department of Family and Community Medicine University of Missouri Sinclair School of Nursing University of Missouri School of Medicine
<b>Yu, Ed</b>	Chairman, Vascular Cures Advancing Innovation for a Healthier Future

# Appendix 9: Diversity, Equity and Inclusion

- CHPR staff members Dr. Melissa Gosdin and Bethney Bonilla continued to lead recurring meetings for CHPR affiliates and staff on anti-racism matters; they present materials on issues related to diversity, equity and inclusion and the group discusses them and ways to use what has been learned to inform CHPR hiring and other practices.
- After consulting with staff from the UC Davis Diversity, Equity, and Inclusion office (DEI), CHPR established a schedule of ongoing unit-wide training sessions led by DEI staff. Sessions in FY 2022-2023 include:

Date	Type	Course
<b>6/9/2022</b>	Virtual	Understanding Diversity and Social Justice
<b>8/18/2022</b>	Virtual	Intercultural Communication and Competence
<b>11/2/2022</b>	In-person	Disability Awareness in the Workplace
<b>12/15/2022</b>	Virtual	Avoiding Bias in the Hiring Process
<b>2/16/2023</b>	Virtual	Is it Bullying? Awareness, Understanding, and Strategies in Dealing with Abrasive Behaviors in the Workplace
<b>4/20/2023</b>	Virtual	LGBTQIA+ Inclusion in the Workplace
<b>6/15/2023</b>	In-person	Understanding Generational Differences