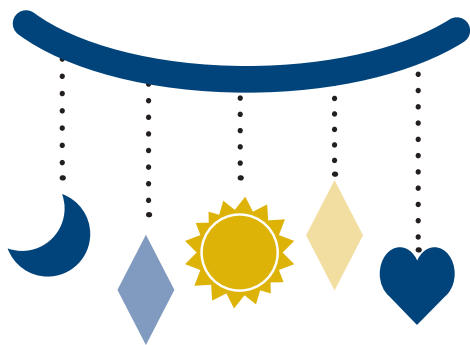


AUTISM EARLY SIGNS IN INFANTS



1 Unusual visual fixations

Unusually strong and persistent examination of objects



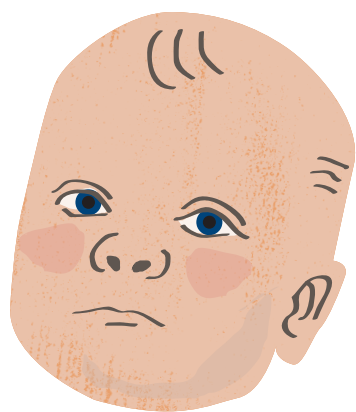
2 Abnormal repetitive behaviors

Spending unusually long periods of time repeating an action, such as looking at their hands or rolling an object



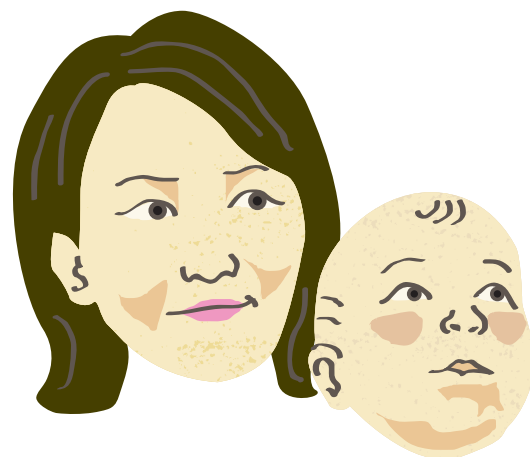
3 Lack of age-appropriate sound development

Delayed development of vowel sounds, such as "ma ma, da da, ta ta"



4 Delayed intentional communication

Neutral facial tones and decreased efforts to gesture and gain parent attention



5 Decreased interest in interaction

Greater interest in objects than people and difficult to sustain face-to-face interactions