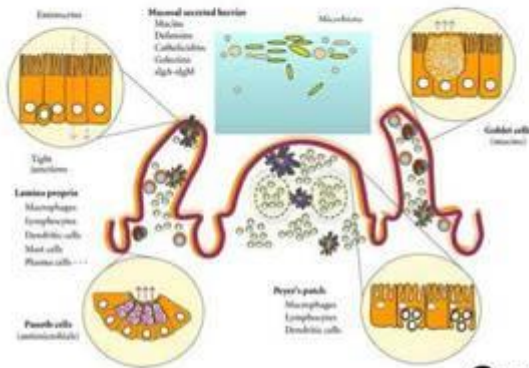


Looking for a way to meet scientists performing exciting biomedical research?



## MMI 291 SEMINAR SERIES

### *Emerging Challenges in Microbiology and Immunology*

*Current Theme: Interdisciplinary Research*



“Assessment of Zoonotic Risks in Aquaponic Lettuce Production:  
A prototype for Experimental Greenhouse Trials”

By

**Elizabeth Antaki, M.S., Ph.D**

Postdoctoral Scholar, Western Center for Food Safety, University of California, Davis

Friday, March 3, 2017

12:10 – 1:00 PM

**Med Sci Building  
Room 180 Med Sci C**

Questions? Call Dr. Sumathi Sankaran-Walters 754-7242  
[ssankaran@ucdavis.edu](mailto:ssankaran@ucdavis.edu)