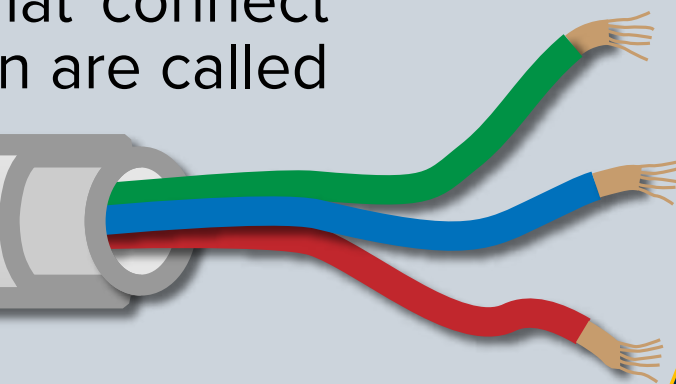


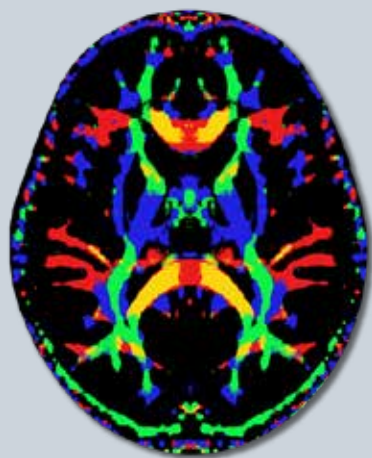
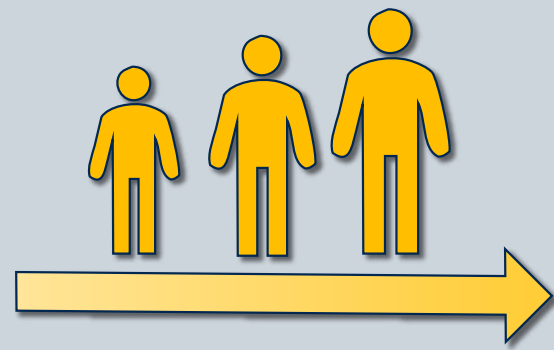
The bundles of wiring that connect different parts of the brain are called

WHITE MATTER



We did brain scans up to 3 times on the same kids as they grew from

**2 TO 6
YEARS OLD**

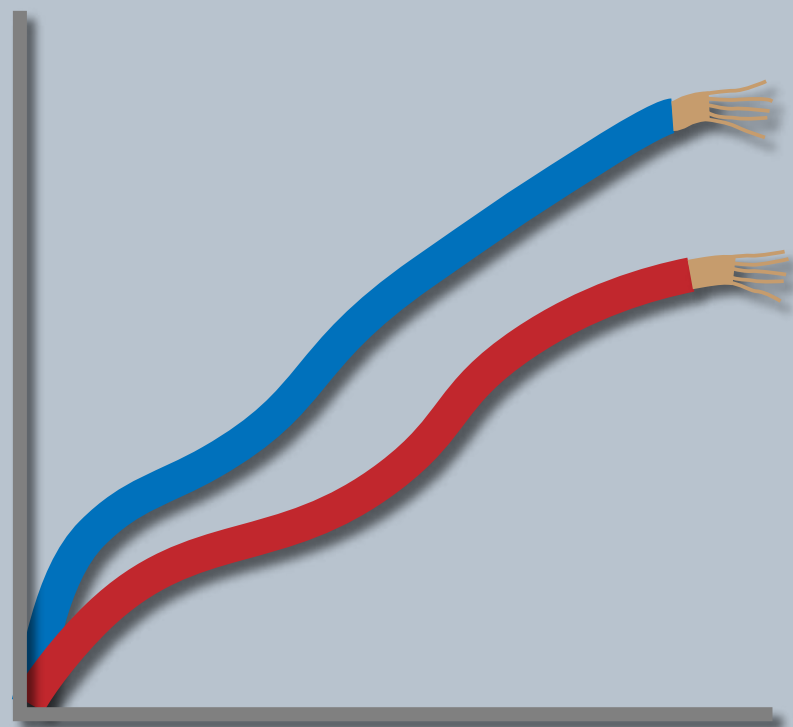


A type of scan called **DIFFUSION WEIGHTED MRI**

gives us a detailed look at white matter structure

Some studies show that autistic brains may be wired differently than non-autistic brains. **When do these differences develop in the brain and how do they relate to autism traits?**

For autistic children, white matter growth was **SLOWER** compared to non-autistic children



Children whose autism traits **INCREASED**

had **SLOWER** white matter growth

compared to children whose autism traits stayed the same or decreased as they got older

Understanding these patterns of early brain growth may help in developing methods for earlier identification of children who may benefit from more supports or therapies when they are young.